

Wireless Master Plan - Telecommunications Site Inventory

This document contains an inventory of 176 telecommunications sites. Each site includes facility details, an aerial map view, and a site photograph (or placeholder for proposed sites).

Table of Contents

1. [SITE 1: LATTICE TOWER WITH PWSF](#)
2. [SITE 2: LATTICE TOWER WITH PWSF](#)
3. [SITE 3: LATTICE TOWER WITH PWSF](#)
4. [SITE 4: LATTICE TOWER](#)
5. [SITE 5: LATTICE TOWER WITH PWSF](#)
6. [SITE 6: MONOPOLE WITH PWSF](#)
7. [SITE 7: LATTICE TOWER](#)
8. [SITE 8: WOOD POLES](#)
9. [SITE 9: GUYED TOWERS](#)
10. [SITE 10: LATTICE TOWERS](#)
11. [SITE 11: SELF SUPPORT TOWER](#)
12. [SITE 12: LATTICE TOWER](#)
13. [SITE 13: LATTICE TOWER](#)
14. [SITE 14: LATTICE TOWER](#)
15. [SITE 15: LATTICE TOWERS](#)
16. [SITE 16: LATTICE TOWER WITH PWSF](#)
17. [SITE 17: GUYED TOWER](#)
18. [SITE 18: GUYED TOWERS](#)
19. [SITE 19: LATTICE TOWERS](#)
20. [SITE 20: LATTICE TOWER](#)
21. [SITE 21: LATTICE TOWERS](#)
22. [SITE 22: GUYED TOWERS](#)
23. [SITE 23: LATTICE TOWER](#)
24. [SITE 24: GUYED TOWER](#)
25. [SITE 25: LATTICE TOWER](#)
26. [SITE 26: GUYED TOWER](#)
27. [SITE 27: LATTICE TOWER AND GUYED TOWER](#)
28. [SITE 28: LATTICE TOWER](#)
29. [SITE 29: GUYED TOWER](#)
30. [SITE 30: LATTICE TOWER](#)
31. [SITE 31: GUYED TOWER](#)
32. [SITE 32: LATTICE TOWER](#)
33. [SITE 33: MONOPOLE WITH PWSF](#)
34. [SITE 34: LATTICE TOWER](#)
35. [SITE 35: LATTICE TOWER WITH PWSF](#)
36. [SITE 36: LATTICE TOWER WITH PWSF](#)
37. [SITE 37: GUYED MONOPOLE WITH PWSF](#)
38. [SITE 38: LATTICE TOWER](#)
39. [SITE 39: SLICK STICK TOWER WITH PWSF](#)
40. [SITE 40: GUYED TOWER](#)
41. [SITE 41: PROPOSED TOWER](#)
42. [SITE 42: LATTICE TOWER](#)
43. [SITE 43: LATTICE TOWER](#)
44. [SITE 44: MONOPOLE WITH PWSF](#)
45. [SITE 45: BASE STATION](#)
46. [SITE 46: BASE STATION WITH PWSF](#)
47. [SITE 47: GUYED TOWER](#)
48. [SITE 48: MONOPOLE WITH PWSF](#)
49. [SITE 49: BASE STATION WITH PWSF](#)
50. [SITE 50: GUYED MONOPOLE WITH PWSF](#)
51. [SITE 51: MONOPOLE](#)
52. [SITE 52: BASE STATION](#)
53. [SITE 53: CONCEALED TOWER WITH PWSF](#)
54. [SITE 54: BASE STATION](#)
55. [SITE 55: GUYED TOWER](#)
56. [SITE 56: BASE STATION](#)
57. [SITE 57: CONCEALED TOWER WITH PWSF](#)
58. [SITE 58: LATTICE TOWER](#)
59. [SITE 59: CONCEALED TOWER WITH PWSF](#)
60. [SITE 60: MONOPOLE WITH PWSF](#)
61. [SITE 61: GUYED MONOPOLE WITH PWSF](#)
62. [SITE 62: GUYED TOWER WITH PWSF](#)
63. [SITE 63: BASE STATION WITH PWSF](#)
64. [SITE 63b: BASE STATION WITH PWSF](#)
65. [SITE 64: CONCEALED TOWER WITH PWSF](#)
66. [SITE 64b: BASE STATION WITH PWSF](#)
67. [SITE 65: BASE STATION](#)
68. [SITE 66: LATTICE TOWERS AND BASE STATION](#)
69. [SITE 67: BASE STATION](#)
70. [SITE 68: MONOPOLE WITH PWSF](#)
71. [SITE 69: BASE STATION WITH PWSF](#)
72. [SITE 70: BASE STATION WITH PWSF](#)
73. [SITE 71: BASE STATION](#)
74. [SITE 72: BASE STATION WITH PWSF](#)
75. [SITE 73: LATTICE TOWER](#)
76. [SITE 74: BASE STATION](#)
77. [SITE 75: BASE STATION](#)
78. [SITE 76: MONOPOLE WITH PWSF](#)
79. [SITE 77: MONOPOLE WITH PWSF](#)
80. [SITE 78: GUYED TOWER WITH PWSF](#)
81. [SITE 79: GUYED TOWER WITH PWSF](#)
82. [SITE 80: MONOPOLE WITH PWSF](#)

83. [SITE 81: LATTICE TOWER WITH PWSE](#)
84. [SITE 82: MONOPOLE WITH PWSE](#)
85. [SITE 83: LATTICE TOWER](#)
86. [SITE 84: MONOPOLE WITH PWSE](#)
87. [SITE 85: LATTICE TOWER](#)
88. [SITE 86: LATTICE TOWER WITH PWSE](#)
89. [SITE 87: LATTICE TOWER WITH PWSE](#)
90. [SITE 88: LATTICE TOWER](#)
91. [SITE 89: LATTICE TOWER WITH PWSE](#)
92. [SITE 90: GUYED TOWER](#)
93. [SITE 91: GUYED TOWER](#)
94. [SITE 92: GUYED TOWER](#)
95. [SITE 93: GUYED TOWER](#)
96. [SITE 94: LATTICE TOWER](#)
97. [SITE 95: GUYED TOWER](#)
98. [SITE 96: GUYED TOWER AND LATTICE TOWER](#)
99. [SITE 97: GUYED TOWER](#)
100. [SITE 98: LATTICE TOWER](#)
101. [SITE 99: LATTICE TOWER](#)
102. [SITE 100: GUYED TOWER AND WOOD POLE](#)
103. [SITE 101: GUYED TOWERS](#)
104. [SITE 102: GUYED TOWER](#)
105. [SITE 103: GUYED TOWERS](#)
106. [SITE 104: LATTICE TOWER WITH PWSE](#)
107. [SITE 105: GUYED TOWER](#)
108. [SITE 106: WOOD POLE](#)
109. [SITE 107: GUYED TOWER AND LATTICE TOWER](#)
110. [SITE 108: GUYED TOWER](#)
111. [SITE 109: LATTICE TOWER](#)
112. [SITE 110: SELF SUPPORT TOWER](#)
113. [SITE 111: LATTICE TOWER](#)
114. [SITE 112: LATTICE TOWER](#)
115. [SITE 113: MONOPOLE WITH PWSE](#)
116. [SITE 114: GUYED TOWER](#)
117. [SITE 115: GUYED TOWER AND WOOD POLE](#)
118. [SITE 116: MONOPOLE WITH PWSE](#)
119. [SITE 117: GUYED TOWER](#)
120. [SITE 118: LATTICE TOWER](#)
121. [SITE 119: LATTICE TOWER](#)
122. [SITE 120: LATTICE TOWER](#)
123. [SITE 121: LATTICE TOWER WITH PWSE](#)
124. [SITE 122: GUYED TOWER](#)
125. [SITE 123: LATTICE TOWER](#)
126. [SITE 124: LATTICE TOWER WITH PWSE](#)
127. [SITE 125: GUYED TOWER](#)
128. [SITE 126: CONCEALED TOWER WITH PWSE](#)
129. [SITE 127: MONOPOLE WITH PWSE](#)
130. [SITE 128: PROPOSED TOWER WITH PWSE](#)
131. [SITE 129: CONCEALED TOWER WITH PWSE](#)
132. [SITE 130: LATTICE TOWER WITH PWSE](#)
133. [SITE 131: BASE STATION WITH PWSE](#)
134. [SITE 132: SELF SUPPORT TOWER](#)
135. [SITE 133: LATTICE TOWER](#)
136. [SITE 134: GUYED TOWER WITH PWSE](#)
137. [SITE 135: LATTICE TOWER](#)
138. [SITE 136: LATTICE TOWER](#)
139. [SITE 137: SELF SUPPORT TOWER](#)
140. [SITE 138: LATTICE TOWER](#)
141. [SITE 139: LATTICE TOWER](#)
142. [SITE 140: GUYED TOWER](#)
143. [SITE 141: LATTICE TOWER](#)
144. [SITE 142: SELF SUPPORT TOWER](#)
145. [SITE 143: POLE WITH PWSE](#)
146. [SITE 144: POLE WITH PWSE](#)
147. [SITE 145: POLE](#)
148. [SITE 146: SELF SUPPORT TOWER WITH PWSE](#)
149. [SITE 147: SELF SUPPORT TOWER](#)
150. [SITE 148: MONOPOLE WITH PWSE](#)
151. [SITE 149: SELF SUPPORT TOWER](#)
152. [SITE 150: SELF SUPPORT TOWER](#)
153. [SITE 151: SELF SUPPORT TOWER](#)
154. [SITE 152: SELF SUPPORT TOWER](#)
155. [SITE 153: GUYED TOWER](#)
156. [SITE 154: GUYED TOWER](#)
157. [SITE 155: GUYED TOWER](#)
158. [SITE 156: BASE STATION](#)
159. [SITE 157: POLE WITH PWSE](#)
160. [SITE 158: MONOPOLE WITH PWSE](#)
161. [SITE 159: BASE STATION WITH PWSE](#)
162. [SITE 160: LATTICE TOWER](#)
163. [SITE 161: GUYED TOWER WITH PWSE](#)
164. [SITE 162: CONCEALED TOWER WITH PWSE](#)
165. [SITE 163: CONCEALED TOWER](#)
166. [SITE 164: MONOPINE WITH PWSE](#)
167. [SITE 165: CONCEALED TOWER WITH PWSE](#)
168. [SITE 166: MONOPINE WITH PWSE](#)
169. [SITE 167: CONCEALED TOWER WITH PWSE](#)
170. [SITE 168: BASE STATION WITH PWSE](#)
171. [SITE 169: MONOPINE WITH PWSE](#)
172. [SITE 170: MONOPOLE](#)
173. [SITE 171: SELF SUPPORT TOWER](#)
174. [SITE 172: MONOPOLE](#)
175. [SITE 173: MONOPOLE WITH PWSE](#)
176. [SITE 174: SELF SUPPORT TOWER WITH PWSE](#)

SITE 1: LATTICE TOWER WITH PWSF

Property Owner	Bureau of Land Management
Facility Owner	SBA
Identification	ASR: N/A; Facility Owner ID: CO10495-A
Address	4721 I-70 Frontage Road, DeBeque
Site Name	Truck Stop Jr.
Type	Lattice
Height	131'
Antenna Types	PWSF; Microwave
Service Provider	4: Cleartalk; Skybeam; T-Mobile; Verizon
Potential Co-Locations	Yes - 2
Parcel #	2445-244-00-914
Zoning	AFT
Zoning Jurisdiction	Mesa County
Latitude	39-20-53.88 N
Longitude	-108-10-14.82 W
Place	DeBeque



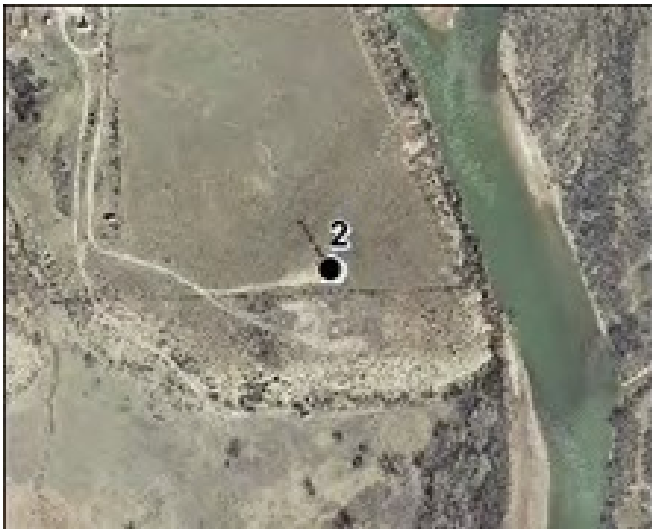
Aerial/Map View - Site 1



Site Photo - Site 1

SITE 2: LATTICE TOWER WITH PWSF

Property Owner	Chevron USA Inc., ETAL
Facility Owner	SBA
Identification	Facility Owner ID: CO10460-A
Address	1921 45 1/2 Road, DeBeque
Site Name	Chevron 2
Type	Lattice
Height	151'
Antenna Types	PWSF; Microwave
Service Provider	1: AT&T
Potential Co-Locations	Yes - 4
Parcel #	2671-054-00-092
Zoning	AFT
Zoning Jurisdiction	Mesa County
Latitude	39-17-28.78 N
Longitude	-108-14-7.02 W
Place	DeBeque



Aerial/Map View - Site 2



Site Photo - Site 2

SITE 3: LATTICE TOWER WITH PWSF

Property Owner	Mark R Walker Revco Trust
Facility Owner	Crown Castle
Identification	Facility Owner ID: 828910
Address	4310 Horse Canyon Road, DeBeque
Site Name	Walker Property
Type	Lattice
Height	60'
Antenna Types	Directional PWSF; Microwave
Service Provider	1: T-Mobile
Potential Co-Locations	Yes - 1 possibly 2
Parcel #	2711-052-00-113
Zoning	AFT
Zoning Jurisdiction	Mesa County
Latitude	39-13-8.88 N
Longitude	-108-15-2.73 W
Place	DeBeque



Aerial/Map View - Site 3



Site Photo - Site 3

SITE 4: LATTICE TOWER

Property Owner	Plateau Valley Fire Protection
Facility Owner	Plateau Valley Fire Protection
Address	49084 KE 1/2 Road, Mesa
Site Name	District Station #92
Type	Attached Lattice
Height	14'
Antenna Types	Emergency Services
Service Provider	Fire Department
Potential Co-Locations	No
Parcel #	2713-202-00-948
Zoning	AFT
Zoning Jurisdiction	Mesa County
Latitude	39-10-52.92N
Longitude	-108-8-16.20 W
Place	Mesa



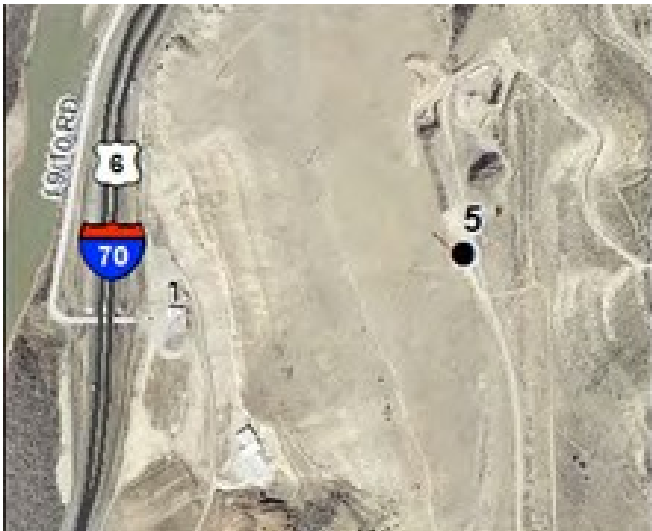
Aerial/Map View - Site 4



Site Photo - Site 4

SITE 5: LATTICE TOWER WITH PWSF

Property Owner	Rudolph Fontanari Trustee
Facility Owner	SBA
Identification	ASR: 1225172 -T; Facility Owner ID: CO10462-A
Address	968 I-70, Mesa
Site Name	Coal Mine
Type	Lattice
Height	127'
Antenna Types	PWSF; Microwave
Service Provider	2: AT&T; T-Mobile
Potential Co-Locations	Yes - 1
Parcel #	2709-344-00-070
Zoning	AFT
Zoning Jurisdiction	Mesa County
Latitude	39-8-38.16 N
Longitude	-108-18-35.76 W
Place	DeBeque Canyon



Aerial/Map View - Site 5



Site Photo - Site 5

SITE 6: MONOPOLE WITH PWSF

Property Owner	Talbott Land and Property LLLP
Facility Owner	SBA
Identification	ASR: 1215662; Facility Owner ID: CO10484-A
Address	3801 F 1/4 Road, Palisade
Site Name	Palisade Peach
Type	Monopole
Height	152'
Antenna Types	PWSF; Microwave
Service Provider	2:
Potential Co-Locations	Yes - 1 possibly 2
Parcel #	2941-023-00-121
Zoning	AFT
Zoning Jurisdiction	Mesa County
Latitude	39-5-30.60 N
Longitude	-108-20-44.76 W
Place	Palisade



Aerial/Map View - Site 6



Site Photo - Site 6

SITE 7: LATTICE TOWER

Property Owner	Eagle Telecommunications Inc.
Facility Owner	DBS PTI Communications
Address	641 44 1/2 Road, Mesa
Type	Lattice
Antenna Types	Microwave
Parcel #	2935-232-00-085
Zoning	AFT
Zoning Jurisdiction	Mesa County
Latitude	39-4-52.51 N
Longitude	-108-12-20.00 W
Place	Lands End



Aerial/Map View - Site 7



Site Photo - Site 7

SITE 8: WOOD POLES

Property Owner	Mesa County
Facility Owner	Mesa County
Address	641 44 1/2 Road, Mesa
Type	Wood Poles
Potential Co-Locations	No
Parcel #	2935-232-00-931
Zoning	AFT
Zoning Jurisdiction	Mesa County
Latitude	39-4-55.18 N
Longitude	-108-12-21.13 W
Place	Lands End



Aerial/Map View - Site 8



Site Photo - Site 8

SITE 9: GUYED TOWERS

Property Owner	Mesa County
Facility Owner	Mesa County
Address	641 44 1/2 Road, Mesa
Site Name	Mesa County Translator
Type	4 Guyed Tower Cluster
Antenna Types	TV Translator: K10RB; K31DW-D
Potential Co-Locations	No
Parcel #	2935-232-00-931
Zoning	AFT
Zoning Jurisdiction	Mesa County
Latitude	39-4-56.84 N
Longitude	-108-12-20.43 W
Place	Lands End



Aerial/Map View - Site 9



Site Photo - Site 9

SITE 10: LATTICE TOWERS

Property Owner	Bureau of Land Management
Facility Owner	FAA Air Traffic Control
Address	6238 44 1/2 Road, Mesa
Type	4 Lattice Towers
Antenna Types	Broadcast
Service Provider	FAA Air Traffic Control
Potential Co-Locations	No
Parcel #	2935-153-00-914
Zoning	AFT
Zoning Jurisdiction	Mesa County
Latitude	39-5-17.83 N
Longitude	-108-13-19.27 W
Place	Lands End



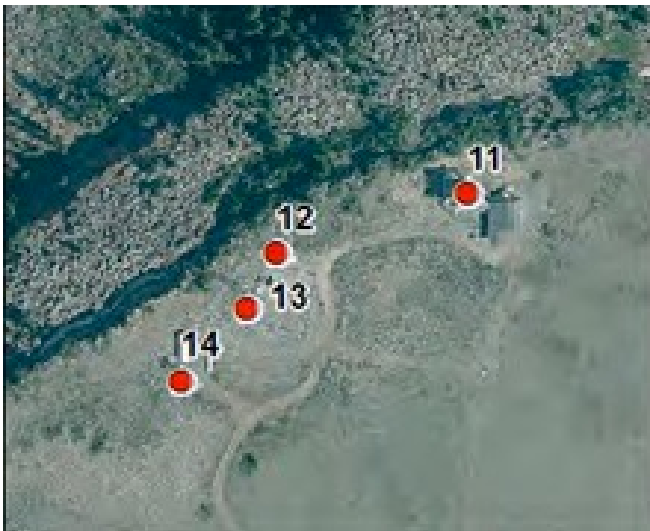
Aerial/Map View - Site 10



Site Photo - Site 10

SITE 11: SELF SUPPORT TOWER

Property Owner	Bureau of Land Management
Facility Owner	Qwest
Address	6238 44 1/2 Road, Mesa
Type	Self Support
Service Provider	Qwest
Potential Co-Locations	No
Parcel #	2935-153-00-914
Zoning	AFT
Zoning Jurisdiction	Mesa County
Latitude	39-5-27.35 N
Longitude	-108-13-22.78 W
Place	Lands End



Aerial/Map View - Site 11



Site Photo - Site 11

SITE 12: LATTICE TOWER

Property Owner	Bureau of Land Management
Facility Owner	Bureau of Land Management
Address	6238 44 1/2 Road, Mesa
Type	Lattice
Service Provider	BLM, USFS, NPS, APHIS
Potential Co-Locations	No
Parcel #	2935-153-00-914
Zoning	AFT
Zoning Jurisdiction	Mesa County
Latitude	39-5-26.73 N
Longitude	-108-13-25.57 W
Place	Lands End



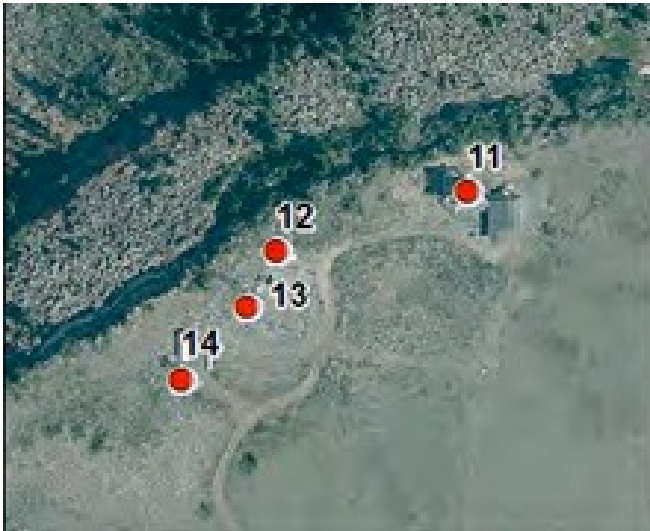
Aerial/Map View - Site 12



Site Photo - Site 12

SITE 13: LATTICE TOWER

Property Owner	Bureau of Land Management
Facility Owner	
Address	6238 44 1/2 Road, Mesa
Type	Lattice
Potential Co-Locations	Unlikely
Parcel #	2935-153-00-914
Zoning	AFT
Zoning Jurisdiction	Mesa County
Latitude	39-5-26.11 N
Longitude	-108-13-26.03 W
Place	Lands End



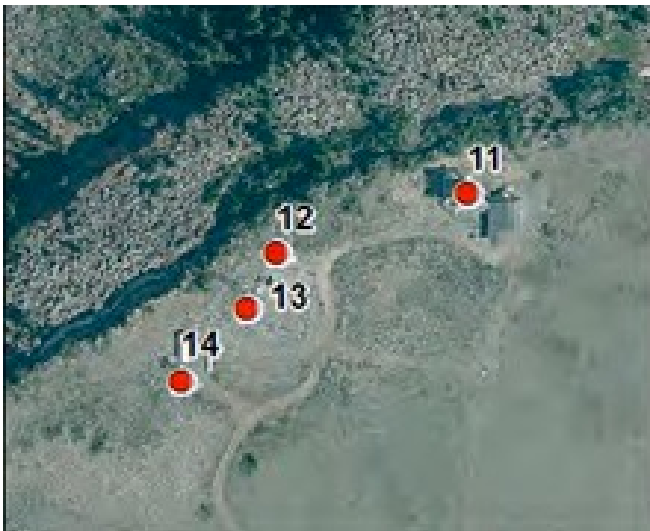
Aerial/Map View - Site 13



Site Photo - Site 13

SITE 14: LATTICE TOWER

Property Owner	Bureau of Land Management
Facility Owner	US Department of Interior Bureau of Reclamation or WAPA, Doe
Address	6238 44 1/2 Road, Mesa
Type	Lattice
Antenna Types	Microwave
Potential Co-Locations	No
Parcel #	2935-153-00-914
Zoning	AFT
Zoning Jurisdiction	Mesa County
Latitude	39-5-25.31 N
Longitude	-108-13-27.03 W
Place	Lands End



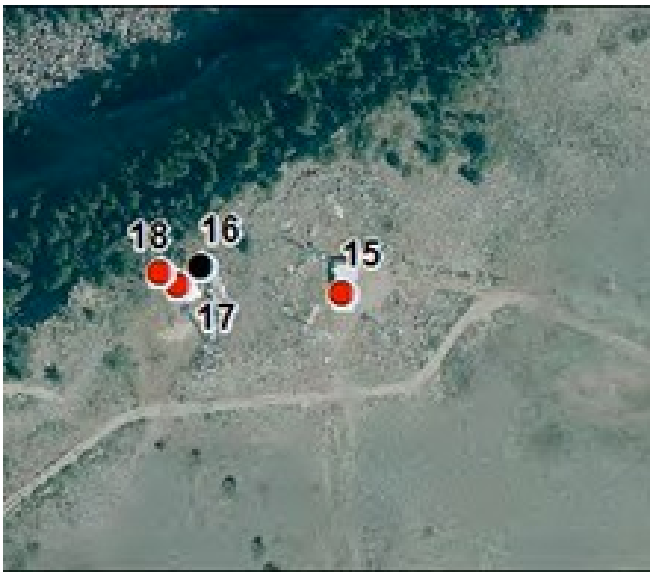
Aerial/Map View - Site 14



Site Photo - Site 14

SITE 15: LATTICE TOWERS

Property Owner	Bureau of Land Management
Facility Owner	FAA Air Traffic Control
Address	6238 44 1/2 Road, Mesa
Type	4 Lattice
Service Provider	FAA Air Traffic Control
Potential Co-Locations	No
Parcel #	2935-153-00-914
Zoning	AFT
Zoning Jurisdiction	Mesa County
Latitude	39-5-22.08 N
Longitude	-108-13-33.14 W
Place	Lands End



Aerial/Map View - Site 15



Site Photo - Site 15

SITE 16: LATTICE TOWER WITH PWSF

Property Owner	DPE LLC
Facility Owner	Verizon Wireless
Identification	Facility Owner ID: 82069
Address	4595 FS Road, Mesa
Site Name	Long Mesa
Type	Lattice
Height	50'
Antenna Types	PWSF; Microwave
Service Provider	1: Verizon
Potential Co-Locations	Possibly 1
Parcel #	2935-153-00-099
Zoning	AFT
Zoning Jurisdiction	Mesa County
Latitude	39-5-22.40 N
Longitude	-108-13-35.06 W
Place	Lands End



Aerial/Map View - Site 16



Site Photo - Site 16

SITE 17: GUYED TOWER

Property Owner	DPE, LLC
Facility Owner	Two-Way Communications
Identification	Facility Owner ID: CO-0815
Address	4595 FS Road, Mesa
Type	Guyed
Antenna Types	Broadcast; 2-Way; Microwave
Service Provider	Nextel and many broadcast entities
Potential Co-Locations	No
Parcel #	2935-153-00-099
Zoning	AFT
Zoning Jurisdiction	Mesa County
Latitude	39-5-22.21 N
Longitude	-108-13-35.38 W
Place	Lands End



Aerial/Map View - Site 17



Site Photo - Site 17

SITE 18: GUYED TOWERS

Property Owner	DPE, LLC
Facility Owner	Two-Way Communications
Identification	Facility Owner ID: CO-816
Address	4595 FS Road, Mesa
Type	2 Guyed
Potential Co-Locations	No
Parcel #	2935-153-00-099
Zoning	AFT
Zoning Jurisdiction	Mesa County
Latitude	39-5-22.34 N
Longitude	-108-13-35.62 W
Place	Lands End



Aerial/Map View - Site 18



Site Photo - Site 18

SITE 19: LATTICE TOWERS

Property Owner	Mountain Communications & Electronics Inc.
Facility Owner	Mountain Communications & Electronics Inc.
Address	641 44 1/2 Road, Mesa
Type	4 Lattice
Antenna Types	Broadcast; Microwave
Service Provider	Mountain Communications
Potential Co-Locations	No
Parcel #	2935-153-00-079
Zoning	AFT
Zoning Jurisdiction	Mesa County
Latitude	39-5-21.03 N
Longitude	-108-13-38.48 W
Place	Lands End



Aerial/Map View - Site 19



Site Photo - Site 19

SITE 20: LATTICE TOWER

Property Owner	Kelly Family Investments
Facility Owner	Crown Castle
Identification	Facility Owner ID: 855730
Address	629 44 1/2 Road, Mesa
Site Name	Grand Mesa
Type	Lattice
Height	100'
Antenna Types	PWSF; 2-Way; Microwave
Service Provider	2: AT&T; Mountain Message
Potential Co-Locations	No
Parcel #	2935-153-00-083
Zoning	AFT
Zoning Jurisdiction	Mesa County
Latitude	39-5-21.41 N
Longitude	-108-13-39.57 W
Place	Lands End



Aerial/Map View - Site 20



Site Photo - Site 20

SITE 21: LATTICE TOWERS

Property Owner	Public Service Company of Colorado
Facility Owner	Public Service Company of Colorado
Type	2 Lattice
Antenna Types	Broadcast; Microwave
Potential Co-Locations	No
Parcel #	2935-153-00-074
Zoning	AFT
Zoning Jurisdiction	Mesa County
Latitude	39-5-20.69 N
Longitude	-108-13-40.42 W
Place	Lands End



Aerial/Map View - Site 21



Site Photo - Site 21

SITE 22: GUYED TOWERS

Property Owner	Hoak Media of Colorado, Inc.
Facility Owner	Hoak Media of Colorado, Inc.
Address	635 44 1/2 Road, Mesa
Type	2 Guyed
Antenna Types	Microwave
Potential Co-Locations	Yes - 1
Parcel #	2935-153-00-081
Zoning	AFT
Zoning Jurisdiction	Mesa County
Latitude	39-5-20.62 N
Longitude	-108-13-39.52 W
Place	Lands End



Aerial/Map View - Site 22



Site Photo - Site 22

SITE 23: LATTICE TOWER

Property Owner	Western Slope Gas Company
Facility Owner	Western Slope Gas Company
Type	Lattice
Antenna Types	Microwave
Potential Co-Locations	Yes - 2
Parcel #	2935-153-00-061
Zoning	AFT
Zoning Jurisdiction	Mesa County
Latitude	39-5-18.97 N
Longitude	-108-13-40.96 W
Place	Lands End



Aerial/Map View - Site 23



Site Photo - Site 23

SITE 24: GUYED TOWER

Property Owner	Bureau of Land Management
Facility Owner	Grand Junction Regional Communications Center
Address	6238 44 1/2 Road, Mesa
Type	Guyed
Antenna Types	Broadcast; Microwave
Potential Co-Locations	Yes - 1
Parcel #	2935-153-00-914
Zoning	AFT
Zoning Jurisdiction	Mesa County
Latitude	39-5-17.9 N
Longitude	-108-13-32.79 W
Place	Lands End



Aerial/Map View - Site 24



Site Photo - Site 24

SITE 25: LATTICE TOWER

Property Owner	Bureau of Land Management
Facility Owner	KN Telecommunications
Address	6238 44 1/2 Road, Mesa
Type	Lattice
Antenna Types	Microwave
Potential Co-Locations	Yes - 3
Parcel #	2935-153-00-914
Zoning	AFT
Zoning Jurisdiction	Mesa County
Latitude	39-5-20.08 N
Longitude	-108-13-28.03 W
Place	Lands End



Aerial/Map View - Site 25



Site Photo - Site 25

SITE 26: GUYED TOWER

Property Owner	Mesa County
Facility Owner	Mesa County
Address	625 44 1/2 Road, Mesa
Type	Guyed
Antenna Types	Microwave
Service Provider	TV Translator
Potential Co-Locations	No
Parcel #	2935-154-00-939
Zoning	AFT
Zoning Jurisdiction	Mesa County
Latitude	39-5-8.06 N
Longitude	-108-13-4.62 W
Place	Lands End



Aerial/Map View - Site 26



Site Photo - Site 26

SITE 27: LATTICE TOWER AND GUYED TOWER

Property Owner	Public Service Company of Colorado
Facility Owner	Public Service Company of Colorado
Type	1 Lattice; 1 Guyed
Antenna Types	Microwave
Potential Co-Locations	Yes - 2
Parcel #	2935-154-00-089
Zoning	AFT
Zoning Jurisdiction	Mesa County
Latitude	39-5-5.53 N
Longitude	-108-13-11.60 W
Place	Lands End



Aerial/Map View - Site 27



Site Photo - Site 27

SITE 28: LATTICE TOWER

Property Owner	Hawks Company Ranch, LLC
Facility Owner	
Type	Lattice
Antenna Types	Microwave
Potential Co-Locations	No
Parcel #	2935-221-00-026
Zoning	AFT
Zoning Jurisdiction	Mesa County
Latitude	39-5-1.07 N
Longitude	-108-13-13.28 W
Place	Lands End



Aerial/Map View - Site 28



Site Photo - Site 28

SITE 29: GUYED TOWER

Property Owner	Hawks Company Ranch, LLC
Facility Owner	US Government (Abandoned)
Type	Guyed
Potential Co-Locations	Possibly
Parcel #	2935-221-00-026
Zoning	AFT
Zoning Jurisdiction	Mesa County
Latitude	39-4-57.81 N
Longitude	-108-13-14.27 W
Place	Lands End



Aerial/Map View - Site 29



Site Photo - Site 29

SITE 30: LATTICE TOWER

Property Owner	City of Grand Junction
Facility Owner	US Government
Type	Lattice
Antenna Types	Doppler
Potential Co-Locations	No
Parcel #	2935-344-00-946
Zoning	AFT
Zoning Jurisdiction	Mesa County
Latitude	39-3-43.67 N
Longitude	-108-12-49.91 W
Place	Lands End



Aerial/Map View - Site 30



Site Photo - Site 30

SITE 31: GUYED TOWER

Property Owner	City of Grand Junction
Facility Owner	Pikes Peak Broadcasting Company
Type	Guyed
Antenna Types	Broadcast
Potential Co-Locations	No
Parcel #	2935-303-00-944
Zoning	AFT
Zoning Jurisdiction	Mesa County
Latitude	39-2-54.25 N
Longitude	-108-15-7.98 W
Place	Palisade Point



Aerial/Map View - Site 31



Site Photo - Site 31

SITE 32: LATTICE TOWER

Property Owner	City of Grand Junction
Facility Owner	
Type	Lattice
Potential Co-Locations	Unlikely
Parcel #	2935-303-00-944
Zoning	AFT
Zoning Jurisdiction	Mesa County
Latitude	39-2-57.1 N
Longitude	-108-15-6.32 W
Place	Palisade Point



Aerial/Map View - Site 32



Site Photo - Site 32

SITE 33: MONOPOLE WITH PWSF

Property Owner	Powerhorn Real Estate
Facility Owner	Comnet
Identification	ASR: 1265975
Address	48295 Powderhorn Road, Mesa
Site Name	Four Corners
Type	Monopole
Height	40'
Antenna Types	PWSF
Service Provider	1: Comnet
Potential Co-Locations	No
Parcel #	2933-203-00-242
Zoning	PUD
Zoning Jurisdiction	Mesa County
Latitude	39-4-15.24 N
Longitude	-108-9-0.65 W
Place	Powderhorn



Aerial/Map View - Site 33



Site Photo - Site 33

SITE 34: LATTICE TOWER

Property Owner	Bureau of Land Management
Facility Owner	Grand Junction Regional Communications Center
Address	397 Old 6 & 50, Mack
Site Name	Rabbit Valley
Type	Lattice
Height	161'
Antenna Types	Microwave
Service Provider	City
Potential Co-Locations	Unlikely
Parcel #	2687-094-00-914
Zoning	AFT
Zoning Jurisdiction	Mesa County
Latitude	39-12-58.31 N
Longitude	-108-58-17.93 W
Place	Rabbit Valley



Aerial/Map View - Site 34



Site Photo - Site 34

SITE 35: LATTICE TOWER WITH PWSF

Property Owner	Bureau of Land Management
Facility Owner	SBA
Identification	ASR: 1224152; Facility Owner ID: CO10458-A
Address	397 Old 6 & 50, Mack
Site Name	BLM Ridge
Type	Lattice
Height	199'
Antenna Types	PWSF; Microwave
Service Provider	3: AT&T; Clear Talk; Verizon(?)
Potential Co-Locations	Yes - 2
Parcel #	2687-094-00-914
Zoning	AFT
Zoning Jurisdiction	Mesa County
Latitude	39-12-56.50 N
Longitude	-108-58-19.05 W
Place	Rabbit Valley



Aerial/Map View - Site 35



Site Photo - Site 35

SITE 36: LATTICE TOWER WITH PWSF

Property Owner	CAM-Colorado LLC
Facility Owner	SBA
Identification	Facility Owner ID: CO10479-A
Address	975 Old 6 & 50, Mack
Site Name	Martin 4
Type	Lattice
Height	199'
Antenna Types	PWSF; Microwave
Service Provider	4: AT&T; Century Link; T-Mobile; Verizon
Potential Co-Locations	Yes - 2
Parcel #	2683-343-00-239
Zoning	I-2
Zoning Jurisdiction	Mesa County
Latitude	39-13-35.22 N
Longitude	-108-52-36.72 W
Place	Mack



Aerial/Map View - Site 36



Site Photo - Site 36

SITE 37: GUYED MONOPOLE WITH PWSF

Property Owner	Mesa Grand, LLC
Facility Owner	SBA
Identification	ASR: 1213520(T); Facility Owner ID: CO10477-A
Address	1575 River Road, Fruita
Site Name	John Mansville
Type	Guyed Monopole
Height	188'
Antenna Types	PWSF
Service Provider	4: AT&T; Sprint; T-Mobile; Verizon
Potential Co-Locations	No
Parcel #	2693-124-02-004
Zoning	Industrial
Zoning Jurisdiction	Fruita
Latitude	39-9-57.12 N
Longitude	-108-45-43.14 W
Place	Fruita



Aerial/Map View - Site 37



Site Photo - Site 37

SITE 38: LATTICE TOWER

Property Owner	Lower Valley Fire District
Facility Owner	Lower Valley Fire District
Address	168 N Mesa Street, Fruita
Type	Lattice
Antenna Types	Emergency Services
Potential Co-Locations	Yes - 3
Parcel #	2697-172-53-944
Zoning	Community, Service & Recreation
Zoning Jurisdiction	Fruita
Latitude	39-9-37.01 N
Longitude	-108-43-59.26 W
Place	Fruita



Aerial/Map View - Site 38



Site Photo - Site 38

SITE 39: SLICK STICK TOWER WITH PWSF

Property Owner	Thomas & Mary Groves
Facility Owner	Vertical Bridge
Identification	ASR: 1272602; Facility Owner ID: US-CO-5028
Address	2018 J 1/2 Road, Fruita
Site Name	Fruita
Type	Slick Stick
Height	160'
Antenna Types	PWSF
Service Provider	Unknown
Potential Co-Locations	Unknown
Parcel #	2697-142-01-001
Zoning	AFT
Zoning Jurisdiction	Mesa County
Latitude	39-9-45.70 N
Longitude	-108-40-46.60 W
Place	Lower Valley



Aerial/Map View - Site 39



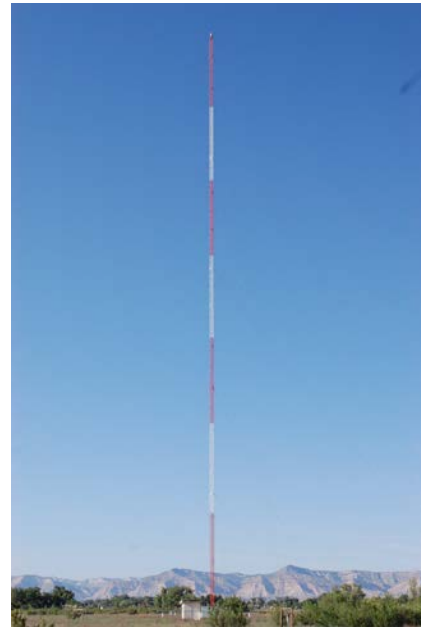
Site Photo - Site 39

SITE 40: GUYED TOWER

Property Owner	Maranatha Investment Partnership, LTD
Facility Owner	MBC Grand Broadcasting, Inc.
Identification	ASR: 1234186
Address	2236 H Road, Grand Junction
Type	Guyed
Height	299'
Antenna Types	Broadcast
Potential Co-Locations	Yes - 2 or 3
Parcel #	2701-303-00-189
Zoning	RSF-R
Zoning Jurisdiction	Mesa County
Latitude	39-7-32.40 N
Longitude	-108-38-15.00 W
Place	GJ Urban



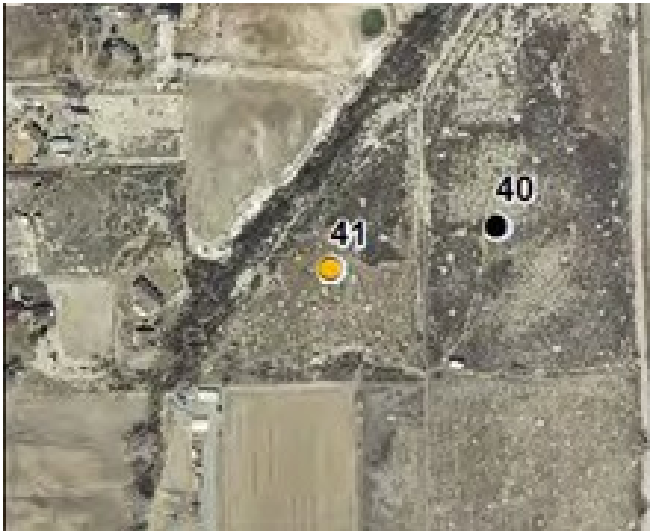
Aerial/Map View - Site 40



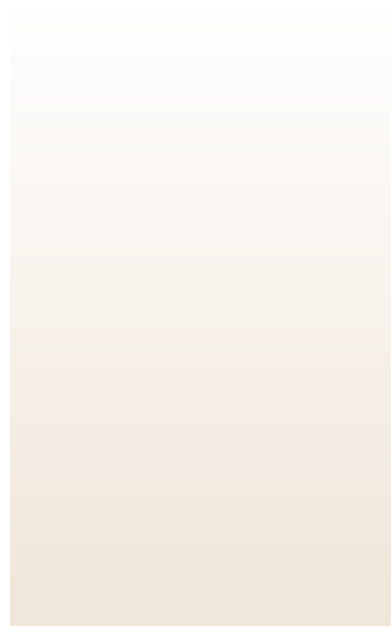
Site Photo - Site 40

SITE 41: PROPOSED TOWER

Property Owner	Maranatha Investment Partnership, LTD
Facility Owner	MBC Grand Broadcasting, Inc.
Identification	ASR: 1214685
Address	2236 H Road, Grand Junction
Type	Not Constructed
Height	Proposed 298'
Parcel #	2701-303-00-315
Zoning	RSF-R
Zoning Jurisdiction	Mesa County
Latitude	39-7-31.29 N
Longitude	108-38-21.08 W
Place	GJ Urban



Aerial/Map View - Site 41



Site Photo - Site 41

SITE 42: LATTICE TOWER

Property Owner	Walker Field Public Airport Authority
Facility Owner	FAA Air Traffic Control
Address	2828 Walker Field Drive, Grand Junction
Type	Lattice
Height	50'
Antenna Types	FAA Air Traffic Control
Service Provider	FAA Air Traffic Control
Potential Co-Locations	No
Parcel #	2705-312-00-941
Zoning	PAD
Zoning Jurisdiction	Grand Junction
Latitude	39-7-16.40 N
Longitude	108-31-30.18 W
Place	GJ Urban



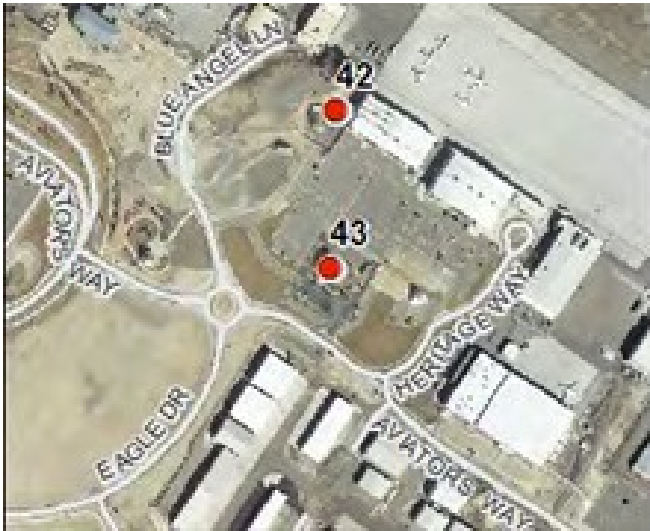
Aerial/Map View - Site 42



Site Photo - Site 42

SITE 43: LATTICE TOWER

Property Owner	National Weather Service
Facility Owner	National Weather Service
Address	2844 Aviators Way, Grand Junction
Type	Attached Lattice
Height	20'
Service Provider	NOAA
Potential Co-Locations	No
Parcel #	2705-312-00-918
Zoning	PAD
Zoning Jurisdiction	Grand Junction
Latitude	39-07-11.91 N
Longitude	108-31-30.54 W
Place	GJ Urban



Aerial/Map View - Site 43



Site Photo - Site 43

SITE 44: MONOPOLE WITH PWSF

Property Owner	Reece Investments, LLC
Facility Owner	SBA
Identification	ASR: 1211360; Facility Owner ID: CO10466-A
Address	761 Crossroads Court, Grand Junction
Site Name	Crossroads 3
Type	Monopole
Height	99'
Antenna Types	PWSF
Service Provider	3: AT&T; Verizon
Potential Co-Locations	Yes - 2
Parcel #	2701-361-21-007
Zoning	C-1
Zoning Jurisdiction	City of Grand Junction
Latitude	39-7-0.60 N
Longitude	-108-32-17.18 W
Place	GJ Urban



Aerial/Map View - Site 44



Site Photo - Site 44

SITE 45: BASE STATION

Property Owner	Robert J. Armantrout
Facility Owner	Western Slope Communication
Address	751 Horizon Court, Grand Junction
Site Name	30
Type	Rooftop Lattice
Antenna Types	STL
Potential Co-Locations	No
Parcel #	2701-364-26-033
Zoning	C-1
Zoning Jurisdiction	Grand Junction
Latitude	39-6-47.88 N
Longitude	-108-32-5.82 W
Place	GJ Urban



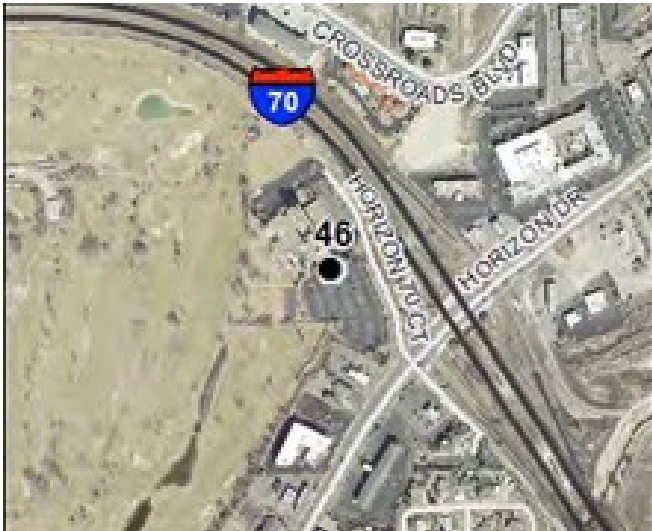
Aerial/Map View - Site 45



Site Photo - Site 45

SITE 46: BASE STATION WITH PWSF

Property Owner	Grand Conjunction, LLC
Facility Owner	Adams Mark/Double Tree
Address	743 Horizon Drive, Grand Junction
Type	Rooftop Antenna
Height	100'
Antenna Types	PWSF
Service Provider	2: Unknown
Potential Co-Locations	Yes
Parcel #	2701-364-28-008
Zoning	C-1
Zoning Jurisdiction	Grand Junction
Latitude	39-6-44.58 N
Longitude	-108-32-30.60 W
Place	GJ Urban



Aerial/Map View - Site 46



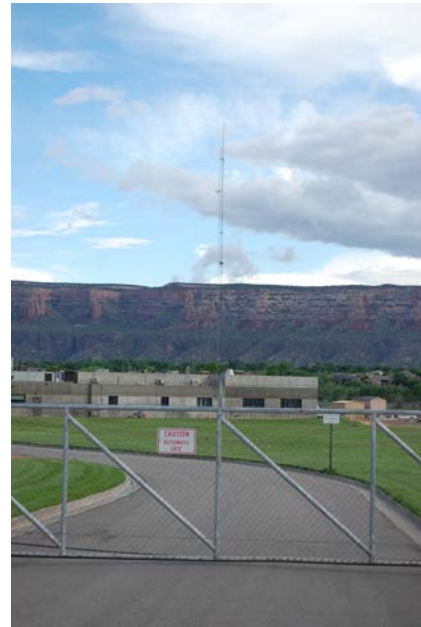
Site Photo - Site 46

SITE 47: GUYED TOWER

Property Owner	City of Grand Junction
Facility Owner	City of Grand Junction
Address	2145 River Road, Grand Junction
Site Name	Persigo Wastewater Treatment Plant
Type	Guyed
Height	110'
Antenna Types	Microwave
Potential Co-Locations	Unlikely
Parcel #	2697-363-00-941
Zoning	I-1
Zoning Jurisdiction	Grand Junction
Latitude	39-6-50.28 N
Longitude	-108-39-28.62 W
Place	GJ Urban



Aerial/Map View - Site 47



Site Photo - Site 47

SITE 48: MONOPOLE WITH PWSF

Property Owner	Craig Meier
Facility Owner	SBA
Identification	ASR: 1228862; Facility Owner ID: CO10480-A
Address	688 29 1/2 Road, Grand Junction
Site Name	Meier
Type	Monopole
Height	145'
Antenna Types	PWSF
Service Provider	4: Cleartalk; Skybeam; T-Mobile; Verizon
Potential Co-Locations	Yes - 1
Parcel #	2943-051-91-003
Zoning	R-5
Zoning Jurisdiction	Grand Junction
Latitude	39-6-11.88 N
Longitude	-108-30-7.14 W
Place	GJ Urban



Aerial/Map View - Site 48



Site Photo - Site 48

SITE 49: BASE STATION WITH PWSF

Property Owner	Clifton Water District
Facility Owner	Clifton Water District
Address	3248 I-70
Type	Water Tank Antenna
Height	75'
Antenna Types	PWSF
Service Provider	1: Verizon
Potential Co-Locations	Yes - 1
Parcel #	2943-022-00-944
Zoning	AFT
Zoning Jurisdiction	Mesa County
Latitude	39-6-21.96 N
Longitude	-108-27-6.30 W
Place	Clifton



Aerial/Map View - Site 49



Site Photo - Site 49

SITE 50: GUYED MONOPOLE WITH PWSF

Property Owner	Ronald E Tipping
Facility Owner	SBA
Identification	ASR: 1213603(T); Facility Owner ID: CO10488-A
Address	2297 River Road, Grand Junction
Site Name	Redlands
Type	Guyed Monopole
Height	153'
Antenna Types	PWSF
Service Provider	4: Cleartalk; Verizon, Unknown
Potential Co-Locations	Yes - 1
Parcel #	2945-064-23-001
Zoning	CSR
Zoning Jurisdiction	Grand Junction
Latitude	39-5-55.56 N
Longitude	-108-37-50.34 W
Place	GJ Urban



Aerial/Map View - Site 50



Site Photo - Site 50

SITE 51: MONOPOLE

Property Owner	Public Service Company of Colorado
Facility Owner	Xcel Energy Services, Ind.
Identification	ASR: 1284420
Address	2538 Blichman Avenue, Grand Junction
Type	Monopole
Height	82'
Antenna Types	Microwave
Potential Co-Locations	No
Parcel #	2945-033-00-159
Zoning	I-O
Zoning Jurisdiction	Grand Junction
Latitude	39-5-50.40 N
Longitude	-108-34-54.60 W
Place	GJ Urban



Aerial/Map View - Site 51



Site Photo - Site 51

SITE 52: BASE STATION

Property Owner	Gray Television Group
Facility Owner	KKCO NBC 11 News
Address	2531 Blichmann Avenue, Grand Junction
Type	Rooftop Antenna
Height	30'
Antenna Types	Broadcast; Microwave; Satellite
Potential Co-Locations	No
Parcel #	2945-033-17-001
Zoning	I-O
Zoning Jurisdiction	Grand Junction
Latitude	39-5-47.13 N
Longitude	108-35-1.78 W
Place	GJ Urban



Aerial/Map View - Site 52



Site Photo - Site 52

SITE 53: CONCEALED TOWER WITH PWSF

Property Owner	HD Development of Maryland, Inc.
Facility Owner	Diamond Communications
Identification	ASR: 1285118
Address	2436 Patterson Road, Grand Junction
Site Name	Grand Junction-HD
Type	Concealed Flag Pole
Height	113'
Antenna Types	PWSF
Service Provider	1: Verizon
Potential Co-Locations	Unknown
Parcel #	2945-043-55-001
Zoning	C-1
Zoning Jurisdiction	Grand Junction
Latitude	39-5-44.88 N
Longitude	-108-36-8.40 W
Place	GJ Urban



Aerial/Map View - Site 53



Site Photo - Site 53

SITE 54: BASE STATION

Property Owner	Bresnan Communications, LLC
Facility Owner	Bresnan Communications, LLC
Identification	ASR: 1288123; Facility Owner ID: 11596 (KGI Wireless)
Address	2502 Foresight Circle, Grand Junction
Type	Rooftop Mix
Height	20' or 30'
Antenna Types	STL; Microwave
Potential Co-Locations	No
Parcel #	2945-033-07-030
Zoning	I-O
Zoning Jurisdiction	Grand Junction
Latitude	39-5-40.20 N
Longitude	-108-35-20.34 W
Place	GJ Urban



Aerial/Map View - Site 54



Site Photo - Site 54

SITE 55: GUYED TOWER

Property Owner	Townsquare Media Grand Junction, LLC
Facility Owner	Vertical Bridge
Identification	ASR: 1024139; Facility Owner ID: US-CO-8009
Address	25 1/2 Road, Grand Junction
Site Name	2555 Dewey Place
Type	Guyed
Height	206'
Antenna Types	AM Broadcast
Potential Co-Locations	Yes - 2 or 3
Parcel #	2945-034-00-112
Zoning	R-16
Zoning Jurisdiction	Grand Junction
Latitude	39-5-41.52 N
Longitude	-108-34-43.20 W
Place	GJ Urban



Aerial/Map View - Site 55



Site Photo - Site 55

SITE 56: BASE STATION

Property Owner	Sisters of Charity of Leavenworth Health Systems, Inc.
Facility Owner	St. Mary's Hospital
Identification	ASR: 1270263
Address	2635 N 7th Street, Grand Junction
Type	Rooftop Mix
Height	222'
Antenna Types	Broadcast; Microwave
Potential Co-Locations	Possibly
Parcel #	2945-112-28-001
Zoning	PD
Zoning Jurisdiction	Grand Junction
Latitude	39-5-27.20 N
Longitude	-108-33-46.60 W
Place	GJ Urban



Aerial/Map View - Site 56



Site Photo - Site 56

SITE 57: CONCEALED TOWER WITH PWSF

Property Owner	Cellco Partnership DBA Verizon Wireless
Facility Owner	Cellco Partnership DBA Verizon Wireless
Address	2702 Patterson Road, Grand Junction
Type	Concealed
Height	50'
Antenna Types	PWSF
Service Provider	1: Verizon
Potential Co-Locations	Unknown
Parcel #	2945-013-00-084
Zoning	R-8
Zoning Jurisdiction	Grand Junction
Latitude	39-5-33.00 N
Longitude	-108-33-0.60 W
Place	GJ Urban



Aerial/Map View - Site 57



Site Photo - Site 57

SITE 58: LATTICE TOWER

Property Owner	City of Grand Junction
Facility Owner	Fire Station
Identification	ASR: 1216522
Address	2827 Patterson Road, Grand Junction
Type	Lattice
Height	149'
Antenna Types	Emergency Services
Potential Co-Locations	Unlikely
Parcel #	2943-072-00-944
Zoning	CSR
Zoning Jurisdiction	Grand Junction
Latitude	39-5-28.08 N
Longitude	-108-31-40.32 W
Place	GJ Urban



Aerial/Map View - Site 58



Site Photo - Site 58

SITE 59: CONCEALED TOWER WITH PWSF

Property Owner	Crossroads United Methodist Church
Facility Owner	AT&T Mobility Spectrum LLC
Identification	ASR: 1280188
Address	599 30 Road, Grand Junction
Type	Concealed
Height	55'
Antenna Types	PWSF
Service Provider	1: AT&T
Potential Co-Locations	No
Parcel #	2943-081-00-951
Zoning	R-4
Zoning Jurisdiction	Grand Junction
Latitude	39-5-29.52 N
Longitude	-108-29-53.46 W
Place	GJ Urban



Aerial/Map View - Site 59



Site Photo - Site 59

SITE 60: MONOPOLE WITH PWSF

Property Owner	IPS Clifton AZ Investors, LLC
Facility Owner	SBA
Identification	ASR: 1213521; Facility Owner ID: CO10481-A
Address	3201-1/2 Highway 6 & 24, Grand Junction
Site Name	Mesa Pawn
Type	Monopole
Height	130'
Antenna Types	PWSF
Service Provider	2: AT&T; T-Mobile
Potential Co-Locations	Yes - 1
Parcel #	2943-112-00-258
Zoning	C-2
Zoning Jurisdiction	Grand Junction
Latitude	39-5-10.98 N
Longitude	-108-27-28.80 W
Place	Clifton



Aerial/Map View - Site 60



Site Photo - Site 60

SITE 61: GUYED MONOPOLE WITH PWSF

Property Owner	NTCH-Colorado Inc.
Facility Owner	SBA
Identification	Facility Owner ID: CO10474-A
Address	589 N Commercial Drive, Grand Junction
Site Name	Hokanson
Type	Guyed Monopole
Height	130'
Antenna Types	PWSF
Service Provider	5: AT&T; Clear Talk; Quest; T-Mobile; Verizon
Potential Co-Locations	Unlikely
Parcel #	2945-102-13-013
Zoning	C-2
Zoning Jurisdiction	Grand Junction
Latitude	39-5-25.38 N
Longitude	-108-35-9.12 W
Place	GJ Urban



Aerial/Map View - Site 61



Site Photo - Site 61

SITE 62: GUYED TOWER WITH PWSF

Property Owner	HOAK Media of Colorado, LLC
Facility Owner	Nexstar Broadcasting, Inc.
Identification	ASR: 1034539
Address	335 Hillcrest Boulevard, Grand Junction
Site Name	KREX
Type	Guyed
Height	343'
Antenna Types	Broadcast; PWSF
Service Provider	1: Unknown
Potential Co-Locations	Yes - 2 or 3
Parcel #	2945-112-27-004
Zoning	R-4
Zoning Jurisdiction	Grand Junction
Latitude	39-5-16.80 N
Longitude	-108-34-0.48 W
Place	GJ Urban



Aerial/Map View - Site 62



Site Photo - Site 62

SITE 63: BASE STATION WITH PWSF

Property Owner	Colorado Mesa University
Facility Owner	
Address	1100 North Avenue, Grand Junction
Type	Rooftop Concealed Antenna
Height	60'
Antenna Types	PWSF
Service Provider	AT&T
Potential Co-Locations	Unknown
Parcel #	2945-114-00-929
Zoning	CSR
Zoning Jurisdiction	Grand Junction
Latitude	39-4-49.58 N
Longitude	-108-33-11.94 W
Place	GJ Urban CMU



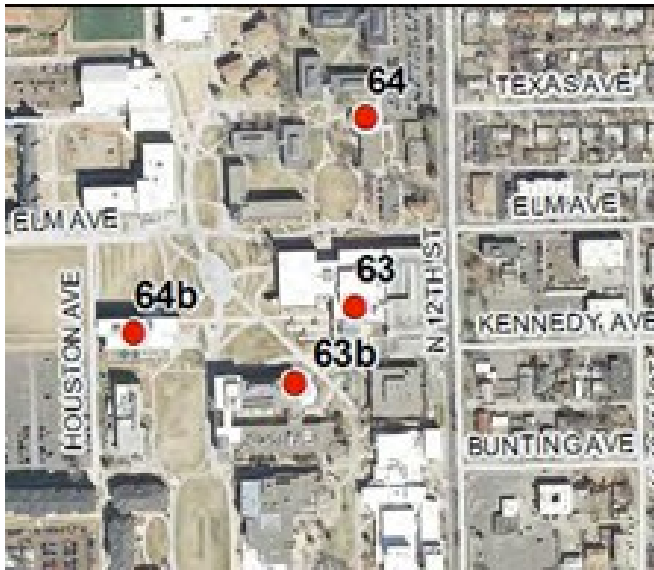
Aerial/Map View - Site 63



Site Photo - Site 63

SITE 63b: BASE STATION WITH PWSF

Property Owner	Colorado Mesa University
Facility Owner	
Address	1100 North Avenue, Grand Junction
Site Name	Wubben Hall
Type	Rooftop Concealed Antenna
Height	55'
Antenna Types	PWSF
Service Provider	1:Verizon
Potential Co-Locations	Unknown
Parcel #	2945-114-00-929
Zoning	CSR
Zoning Jurisdiction	Grand Junction
Latitude	39-4-47.56 N
Longitude	-108-33-14.06 W
Place	GJ Urban CMU



Aerial/Map View - Site 63b



Site Photo - Site 63b

SITE 64: CONCEALED TOWER WITH PWSF

Property Owner	Colorado Mesa University
Facility Owner	
Address	1151 Elm Avenue, Grand Junction
Type	Concealed Light
Height	49'
Antenna Types	PWSF
Service Provider	T-Mobile
Potential Co-Locations	Unknown
Parcel #	2945-114-04-923
Zoning	CSR
Zoning Jurisdiction	Grand Junction
Latitude	39-4-54.67 N
Longitude	-108-33-11.37 W
Place	GJ Urban CMU



Aerial/Map View - Site 64



Site Photo - Site 64

SITE 64b: BASE STATION WITH PWSF

Property Owner	Colorado Mesa University
Facility Owner	
Address	1405 Houston Avenue, Grand Junction
Type	Rooftop Concealed Antenna
Height	55'
Antenna Types	PWSF
Service Provider	1: Sprint
Potential Co-Locations	Unknown
Parcel #	2945-114-25-921
Zoning	CSR
Zoning Jurisdiction	Grand Junction
Latitude	39-4-49.06 N
Longitude	-108-33-19.54 W
Place	GJ Urban CMU



Aerial/Map View - Site 64b



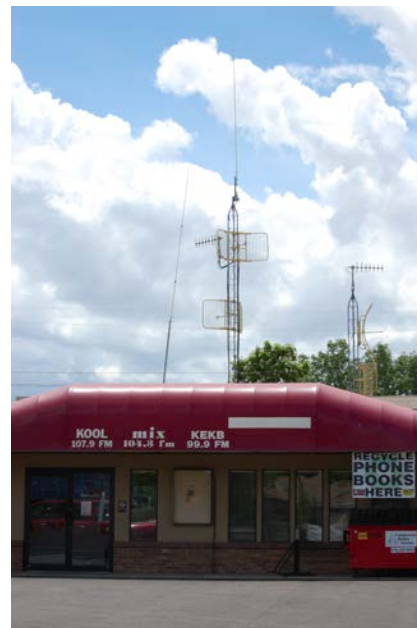
Site Photo - Site 64b

SITE 65: BASE STATION

Property Owner	4th and Kennedy Avenue, LLC
Facility Owner	Townsquare Media
Address	315 Kennedy Avenue, Grand Junction
Type	Rooftop Lattice
Height	40'
Antenna Types	STL
Potential Co-Locations	No
Parcel #	2945-113-16-010
Zoning	B-1
Zoning Jurisdiction	Grand Junction
Latitude	39-4-46.26 N
Longitude	-108-34-0.42 W
Place	GJ Urban



Aerial/Map View - Site 65



Site Photo - Site 65

SITE 66: LATTICE TOWERS AND BASE STATION

Property Owner	Maranatha Investment Partnership, LTD
Facility Owner	
Address	1360 E. Sherwood Drive, Grand Junction
Type	Rooftop 2 Lattice
Height	55'
Antenna Types	STL
Potential Co-Locations	No
Parcel #	2945-113-17-013
Zoning	B-1
Zoning Jurisdiction	Grand Junction
Latitude	39-4-47.28 N
Longitude	-108-34-4.80 W
Place	GJ Urban



Aerial/Map View - Site 66



Site Photo - Site 66

SITE 67: BASE STATION

Property Owner	Pear Park Baptist Church
Facility Owner	Pear Park Baptist Church
Address	3102 E Road, Grand Junction
Type	Rooftop Guyed
Height	110'
Antenna Types	Business Broadband
Potential Co-Locations	Unlikely
Parcel #	2943-103-00-952
Zoning	RSF-R
Zoning Jurisdiction	Mesa County
Latitude	39-4-39.48 N
Longitude	-108-28-38.76 W
Place	GJ Urban



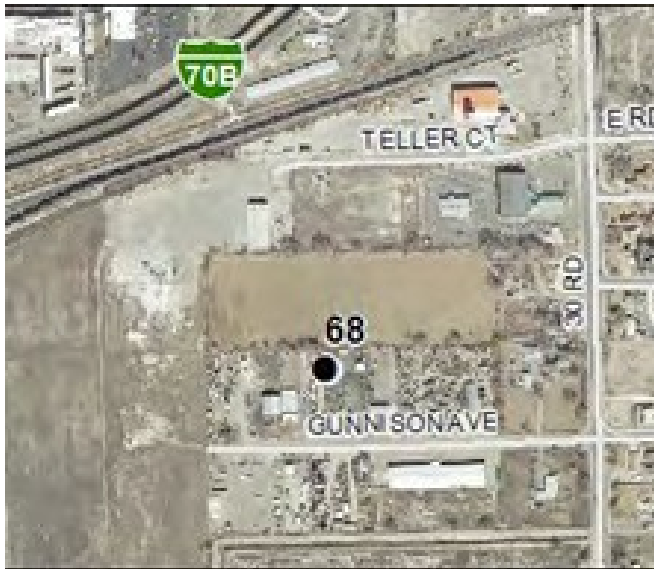
Aerial/Map View - Site 67



Site Photo - Site 67

SITE 68: MONOPOLE WITH PWSF

Property Owner	NTCH Colorado, Inc
Facility Owner	SBA
Identification	Facility Owner ID: CO10468-A
Address	2982 Gunnison Avenue, Grand Junction
Site Name	E-Babe
Type	Monopole
Height	99'
Antenna Types	PWSF
Service Provider	2: Verizon; Unknown
Potential Co-Locations	Yes - 2
Parcel #	2943-171-07-010
Zoning	I-1
Zoning Jurisdiction	Grand Junction
Latitude	39-4-24.66 N
Longitude	-108-29-59.22 W
Place	GJ Urban



Aerial/Map View - Site 68



Site Photo - Site 68

SITE 69: BASE STATION WITH PWSF

Property Owner	Home Loan Bank Building Corp.
Facility Owner	Verizon
Address	205 N 4th Street, Grand Junction
Type	Rooftop Antenna
Height	60'
Antenna Types	PWSF
Service Provider	1: Verizon
Potential Co-Locations	Possibly
Parcel #	2945-143-10-007
Zoning	B-2
Zoning Jurisdiction	Grand Junction
Latitude	39-4-7.08 N
Longitude	-108-33-59.04 W
Place	GJ Urban



Aerial/Map View - Site 69



Site Photo - Site 69

SITE 70: BASE STATION WITH PWSF

Property Owner	ENIPLA Building Company
Facility Owner	Alpine Bank
Address	225 N 5th Street, Grand Junction
Site Name	Alpine Bank
Type	Rooftop Mix
Height	200'
Antenna Types	Emergency Services; PWSF
Service Provider	1: AT&T
Potential Co-Locations	Possibly
Parcel #	2945-143-09-010
Zoning	B-2
Zoning Jurisdiction	Grand Junction
Latitude	39-4-7.62 N
Longitude	-108-33-53.34 W
Place	GJ Urban



Aerial/Map View - Site 70



Site Photo - Site 70

SITE 71: BASE STATION

Property Owner	Bucklin Family Properties
Facility Owner	Colorado Public Radio
Address	414 Main Street, Grand Junction
Type	Rooftop Mix
Height	30'
Antenna Types	STL
Potential Co-Locations	Possibly
Parcel #	2945-143-16-008
Zoning	B-2
Zoning Jurisdiction	Grand Junction
Latitude	39-4-3.18 N
Longitude	-108-33-56.82 W
Place	GJ Urban



Aerial/Map View - Site 71



Site Photo - Site 71

SITE 72: BASE STATION WITH PWSF

Property Owner	HR Adventures, LLC
Facility Owner	Dalby, Wendland & Company
Address	464 Main Street, Grand Junction
Site Name	Dalby, Wendland & Company
Type	Rooftop Antenna
Height	80'
Antenna Types	PWSF
Service Provider	1: T-Mobile
Potential Co-Locations	Possibly
Parcel #	2945-143-16-018
Zoning	B-2
Zoning Jurisdiction	Grand Junction
Latitude	39-4-2.94 N
Longitude	-108-33-52.74 W
Place	GJ Urban



Aerial/Map View - Site 72



Site Photo - Site 72

SITE 73: LATTICE TOWER

Property Owner	Qwest
Facility Owner	Qwest
Identification	ASR: 1030313
Address	800 Main Street, Grand Junction
Type	Lattice
Height	205'
Antenna Types	Microwave
Service Provider	Qwest - Century Link
Potential Co-Locations	Unknown
Parcel #	2945-144-16-019
Zoning	B-2
Zoning Jurisdiction	Grand Junction
Latitude	39-4-2.82 N
Longitude	-108-33-33.00 W
Place	GJ Urban



Aerial/Map View - Site 73



Site Photo - Site 73

SITE 74: BASE STATION

Property Owner	City of Grand Junction
Facility Owner	City of Grand Junction Police Department
Address	555 Ute Avenue, Grand Junction
Type	Rooftop Lattice
Height	70'
Antenna Types	Emergency Services
Service Provider	City of Grand Junction
Potential Co-Locations	Possibly
Parcel #	2945-143-64-941
Zoning	B-2
Zoning Jurisdiction	Grand Junction
Latitude	39-3-53.46 N
Longitude	-108-33-48 W
Place	GJ Urban



Aerial/Map View - Site 74



Site Photo - Site 74

SITE 75: BASE STATION

Property Owner	State of Colorado & Department of Administration
Facility Owner	State of Colorado
Address	222 S 6th Street, Grand Junction
Type	Rooftop Lattice
Height	95'
Antenna Types	Microwave
Potential Co-Locations	Possibly
Parcel #	2945-143-30-921
Zoning	B-2
Zoning Jurisdiction	Grand Junction
Latitude	39-3-56.52 N
Longitude	-108-33-44.76 W
Place	GJ Urban



Aerial/Map View - Site 75



Site Photo - Site 75

SITE 76: MONOPOLE WITH PWSF

Property Owner	Landmark Baptist Church of GJ Inc.
Facility Owner	SBA
Identification	ASR: 1213517; Facility Owner ID: CO10493-A
Address	1600 Ute Avenue, Grand Junction
Site Name	Switch
Type	Monopole
Height	150'
Antenna Types	PWSF; Microwave
Service Provider	4: Clear Talk; Sprint; Unknown
Potential Co-Locations	Possibly
Parcel #	2945-133-00-045
Zoning	C-1
Zoning Jurisdiction	Grand Junction
Latitude	39-3-58.80 N
Longitude	-108-32-43.14 W
Place	GJ Urban



Aerial/Map View - Site 76



Site Photo - Site 76

SITE 77: MONOPOLE WITH PWSF

Property Owner	Clifton Sanitation District
Facility Owner	Verizon Wireless
Identification	Facility Owner ID: 413923
Address	3227 D Road, Clifton
Site Name	CO3 Palomino
Type	Monopole
Height	100'
Antenna Types	PWSF
Service Provider	1: Verizon
Potential Co-Locations	Yes - 2
Parcel #	2943-232-00-942
Zoning	AFT
Zoning Jurisdiction	Mesa County
Latitude	39-3-45.42 N
Longitude	-108-27-12.12 W
Place	Clifton



Aerial/Map View - Site 77



Site Photo - Site 77

SITE 78: GUYED TOWER WITH PWSF

Property Owner	New Cingular Wireless PCS LLC
Facility Owner	Crown Castle International
Identification	ASR: 1032049; Facility Owner ID: 855748
Address	2784 Winters Avenue, Grand Junction
Site Name	Grand Junction
Type	Guyed
Height	503'
Antenna Types	PWSF; Microwave
Service Provider	1: AT&T
Potential Co-Locations	Yes - 3
Parcel #	2945-241-00-238
Zoning	I-2
Zoning Jurisdiction	Mesa County
Latitude	39-3-29.16 N
Longitude	-108-32-13.98 W
Place	GJ Urban



Aerial/Map View - Site 78



Site Photo - Site 78

SITE 79: GUYED TOWER WITH PWSF

Property Owner	Colorado RSA #3 LP Acting
Facility Owner	American Tower Corporation
Identification	ASR: 1022234; Facility Owner ID: 82102
Address	2816 C 1/2 Road, Grand Junction
Site Name	Grand Junction
Type	Guyed
Height	260'
Antenna Types	PWSF; Microwave
Service Provider	1: Verizon
Potential Co-Locations	Yes -3
Parcel #	2943-192-00-038
Zoning	RSF-R
Zoning Jurisdiction	Mesa County
Latitude	39-3-23.22 N
Longitude	-108-31-48.48 W
Place	GJ Urban



Aerial/Map View - Site 79



Site Photo - Site 79

SITE 80: MONOPOLE WITH PWSF

Property Owner	City of Grand Junction
Facility Owner	Crown Castle International
Identification	Facility Owner ID: 857401
Address	2057 S Broadway, Grand Junction
Site Name	Redlands 2
Type	Monopole
Height	60'
Antenna Types	PWSF
Service Provider	1: AT&T
Potential Co-Locations	Yes - 1
Parcel #	2947-223-00-948
Zoning	CSR
Zoning Jurisdiction	Grand Junction
Latitude	39-4-38.76 N
Longitude	-108-40-7.86 W
Place	GJ Urban



Aerial/Map View - Site 80



Site Photo - Site 80

SITE 81: LATTICE TOWER WITH PWSF

Property Owner	Grand Junction Land CO., LLC
Facility Owner	Grand Junction Regional Communications Center
Address	400 23 Road, Grand Junction
Site Name	CO3 Ravenwood
Type	Lattice
Height	110'
Antenna Types	PWSF; Wireless Broadband
Service Provider	2: SBT Wireless Broadband; Verizon
Potential Co-Locations	Possibly - 1
Parcel #	2945-184-00-098
Zoning	PD
Zoning Jurisdiction	Grand Junction
Latitude	39-3-40.80 N
Longitude	-108-38-25.32 W
Place	GJ Urban



Aerial/Map View - Site 81



Site Photo - Site 81

SITE 82: MONOPOLE WITH PWSF

Property Owner	Ute Water Conservancy District
Facility Owner	SBA
Identification	ASR: 1236331; Facility Owner ID: CO10496-A
Address	380 South Camp Road, Grand Junction
Site Name	Ute Water
Type	Monopole
Height	81'
Antenna Types	PWSF; Microwave
Service Provider	2: AT&T; T-Mobile
Potential Co-Locations	No
Parcel #	2945-192-00-947
Zoning	PD
Zoning Jurisdiction	Grand Junction
Latitude	39-3-40.20 N
Longitude	-108-38-18.90 W
Place	GJ Urban



Aerial/Map View - Site 82



Site Photo - Site 82

SITE 83: LATTICE TOWER

Property Owner	City of Grand Junction
Facility Owner	City of Grand Junction
Address	244 26 1/4 Road, Grand Junction
Site Name	Infiltration Plant
Type	Lattice
Height	135'
Antenna Types	Microwave
Potential Co-Locations	Yes - 3
Parcel #	2945-263-00-945
Zoning	CSR
Zoning Jurisdiction	Grand Junction
Latitude	39-2-22.20 N
Longitude	-108-33-46.32 W
Place	GJ Urban



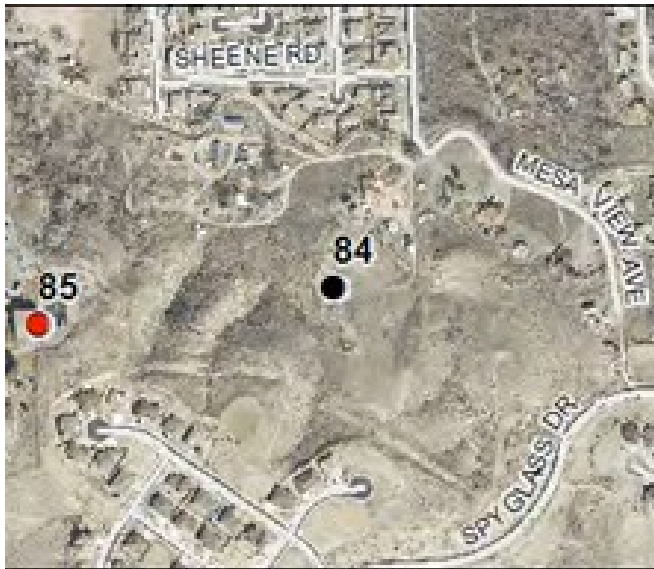
Aerial/Map View - Site 83



Site Photo - Site 83

SITE 84: MONOPOLE WITH PWSF

Property Owner	Staton Family Trust
Facility Owner	SBA
Identification	Facility Owner ID: CO 10492-A
Address	235 Linden Avenue, Grand Junction
Site Name	Staton
Type	Monopole
Height	82'
Antenna Types	PWSF; Microwave
Service Provider	1: Clear Talk
Potential Co-Locations	Yes - 1
Parcel #	2945-264-00-053
Zoning	R-2
Zoning Jurisdiction	Grand Junction
Latitude	39-2-17.22 N
Longitude	-108-33-28.68 W
Place	GJ Urban



Aerial/Map View - Site 84



Site Photo - Site 84

SITE 85: LATTICE TOWER

Property Owner	City of Grand Junction
Facility Owner	City of Grand Junction
Address	244 26 1/4 Road, Grand Junction
Site Name	Water Treatment Plant
Type	Lattice
Height	88'
Antenna Types	Microwave
Potential Co-Locations	No
Parcel #	2945-264-00-946
Zoning	CSR
Zoning Jurisdiction	Grand Junction
Latitude	39-2-16.26 N
Longitude	-108-33-41.40 W
Place	GJ Urban



Aerial/Map View - Site 85



Site Photo - Site 85

SITE 86: LATTICE TOWER WITH PWSF

Property Owner	Bureau of Land Management
Facility Owner	SBA
Identification	ASR: 1221440; Facility Owner ID: CO 12022-A
Address	121 29 Road, Grand Junction
Site Name	Grand Junction 2 Term.
Type	Lattice
Height	66'
Antenna Types	Microwave; PWSF
Service Provider	1: Unknown
Potential Co-Locations	Possibly - 1
Parcel #	2967-064-00-914
Zoning	AFT
Zoning Jurisdiction	Mesa County
Latitude	39-1-7.338 N
Longitude	-108-31-45.188 W
Place	Orchard Mesa



Aerial/Map View - Site 86



Site Photo - Site 86

SITE 87: LATTICE TOWER WITH PWSF

Property Owner	Charles and Sandra Durcraay
Facility Owner	SBA
Identification	ASR: 1215656; Facility Owner ID: CO 10467-A
Address	63 31 Road, Grand Junction
Site Name	Ducray
Type	Lattice
Height	165'
Antenna Types	PWSF
Service Provider	6: AT&T; Cleartalk; Skybeam; Texas Telecom; Union Wireless; Verizon
Potential Co-Locations	Yes - 3
Parcel #	2967-042-00-197
Zoning	AFT
Zoning Jurisdiction	Mesa County
Latitude	39-0-58.26 N
Longitude	-108-29-21.96 W
Place	Orchard Mesa



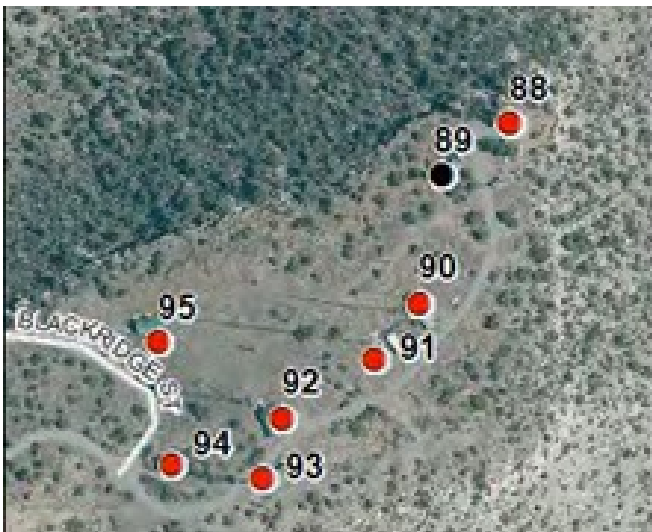
Aerial/Map View - Site 87



Site Photo - Site 87

SITE 88: LATTICE TOWER

Property Owner	Bureau of Land Management
Facility Owner	Public Service Company
Identification	Facility Owner ID: COC33326
Address	3471 N 16 1/2 Road, Fruita
Type	Lattice
Antenna Types	Microwave
Potential Co-Locations	Possibly
Parcel #	2949-143-00-914
Zoning	AFT
Zoning Jurisdiction	Mesa County
Latitude	39-4-2.25 N
Longitude	-108-44-40.96 W
Place	Black Ridge



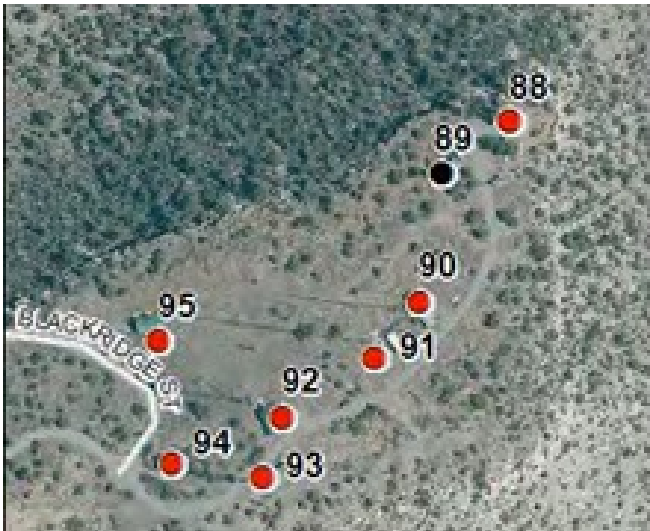
Aerial/Map View - Site 88



Site Photo - Site 88

SITE 89: LATTICE TOWER WITH PWSF

Property Owner	Bureau of Land Management
Facility Owner	American Tower Corporation
Identification	Facility Owner ID: 82129
Address	3471 N 16 1/2 Road, Fruita
Site Name	Mack #2
Type	Lattice
Height	87'
Antenna Types	PWSF; Microwave
Service Provider	1: Verizon
Potential Co-Locations	Possibly
Parcel #	2949-143-00-914
Zoning	AFT
Zoning Jurisdiction	Mesa County
Latitude	39-4-1.53 N
Longitude	-108-44-42.19 W
Place	Black Ridge



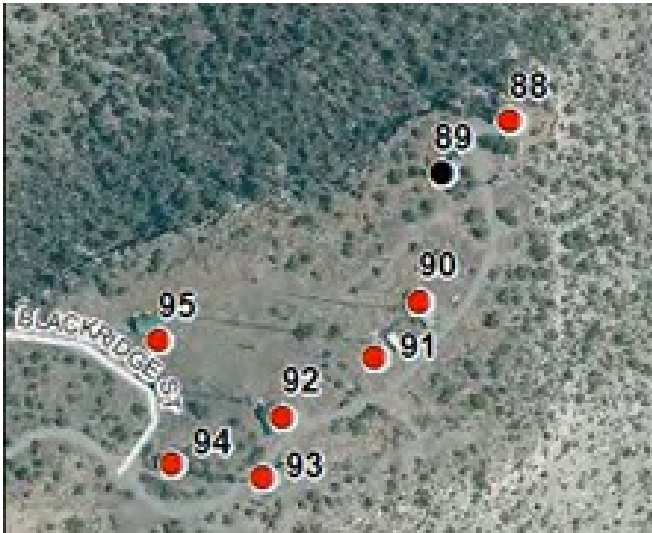
Aerial/Map View - Site 89



Site Photo - Site 89

SITE 90: GUYED TOWER

Property Owner	Bureau of Land Management
Facility Owner	MBC Grand Broadcasting
Identification	ASR: 1022341; Facility Owner ID: COC65086
Address	3471 N 16 1/2 Road, Fruita
Type	Guyed
Height	230'
Antenna Types	FM Broadcast
Potential Co-Locations	Yes - 2
Parcel #	2949-143-00-914
Zoning	AFT
Zoning Jurisdiction	Mesa County
Latitude	39-3-59.72 N
Longitude	-108-44-42.69 W
Place	Black Ridge



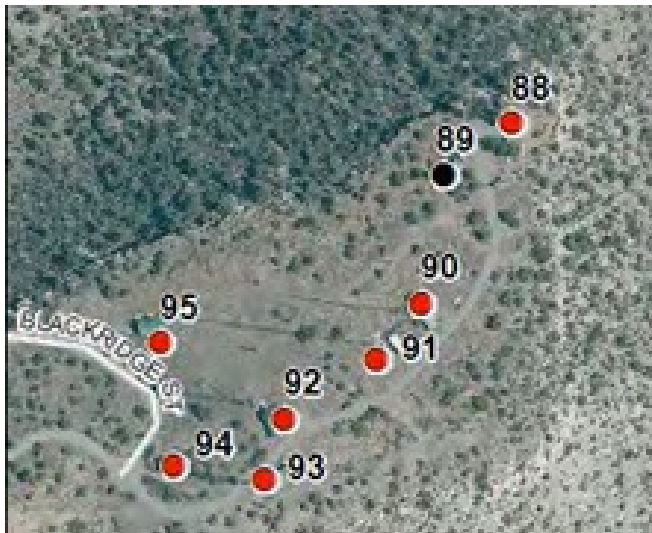
Aerial/Map View - Site 90



Site Photo - Site 90

SITE 91: GUYED TOWER

Property Owner	Bureau of Land Management
Facility Owner	MBC Grand Broadcasting
Identification	ASR: 1226999; Facility Owner ID: COC65086
Address	3471 N 16 1/2 Road, Fruita
Type	Guyed
Height	345'
Antenna Types	FM Broadcast
Potential Co-Locations	Yes - 2
Parcel #	2949-143-00-914
Zoning	AFT
Zoning Jurisdiction	Mesa County
Latitude	39-3-58.93 N
Longitude	-108-44-43.50 W
Place	Black Ridge



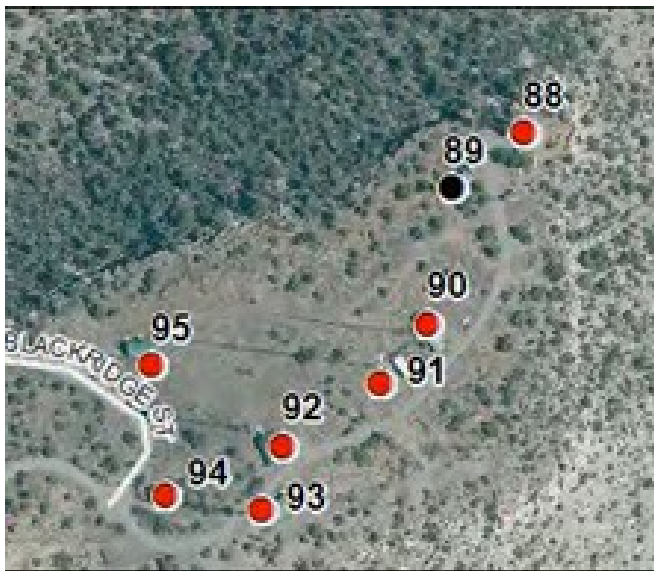
Aerial/Map View - Site 91



Site Photo - Site 91

SITE 92: GUYED TOWER

Property Owner	Bureau of Land Management
Facility Owner	Colorado Public Radio & Western Slope Communications
Identification	Facility Owner ID: COC40258 & COC56792
Address	3471 N 16 1/2 Road, Fruita
Type	Guyed
Antenna Types	Broadcast; Microwave
Potential Co-Locations	Unknown
Parcel #	2949-143-00-914
Zoning	AFT
Zoning Jurisdiction	Mesa County
Latitude	39-3-58.12 N
Longitude	-108-44-45.39 W
Place	Black Ridge



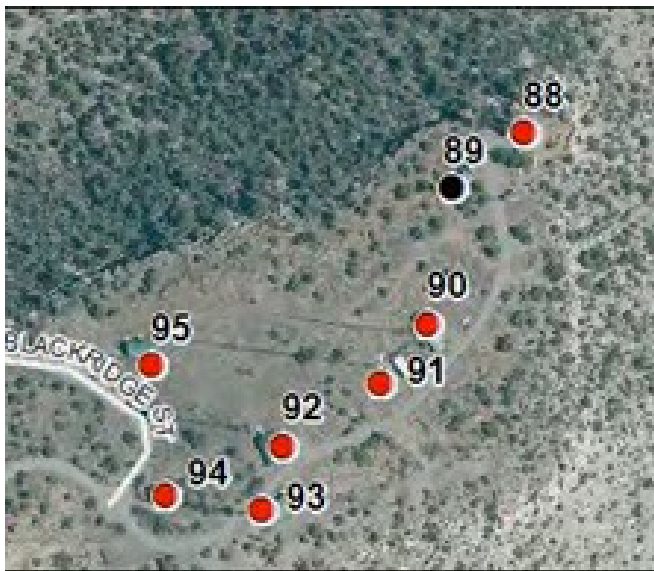
Aerial/Map View - Site 92



Site Photo - Site 92

SITE 93: GUYED TOWER

Property Owner	Bureau of Land Management
Facility Owner	Hoak Media
Identification	Facility Owner ID: COC057910
Address	3471 N 16 1/2 Road, Fruita
Type	Guyed
Antenna Types	Broadcast; Microwave
Potential Co-Locations	No
Parcel #	2949-143-00-914
Zoning	AFT
Zoning Jurisdiction	Mesa County
Latitude	39-3-57.26 N
Longitude	-108-44-45.62 W
Place	Black Ridge



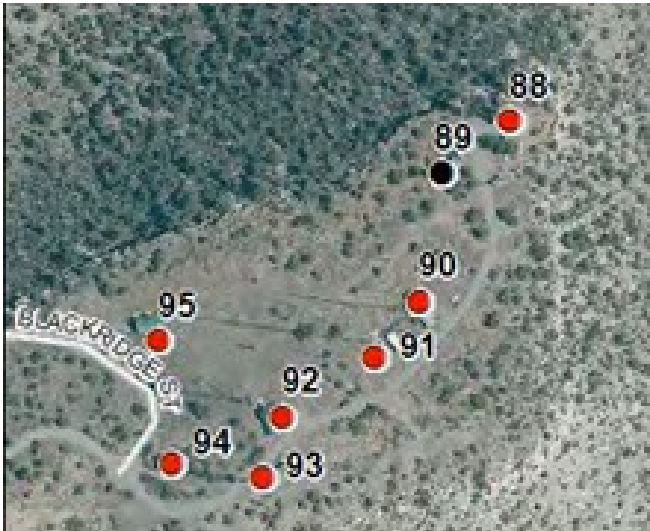
Aerial/Map View - Site 93



Site Photo - Site 93

SITE 94: LATTICE TOWER

Property Owner	Bureau of Land Management
Facility Owner	Educational Media Foundation
Identification	Facility Owner ID: COC50803
Address	3471 N 16 1/2 Road, Fruita
Type	Lattice
Antenna Types	FM Broadcast
Service Provider	KLove 90.3
Potential Co-Locations	Yes - 1
Parcel #	2949-143-00-914
Zoning	AFT
Zoning Jurisdiction	Mesa County
Latitude	39-3-57.49 N
Longitude	-108-44-47.25 W
Place	Black Ridge



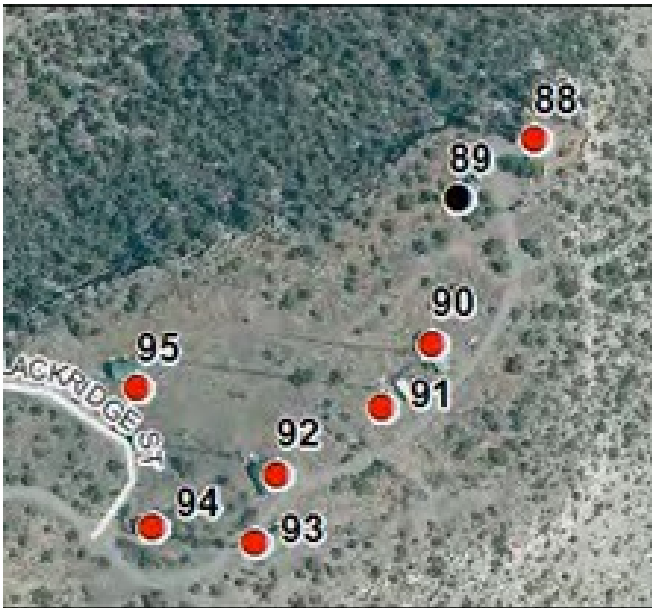
Aerial/Map View - Site 94



Site Photo - Site 94

SITE 95: GUYED TOWER

Property Owner	Bureau of Land Management
Facility Owner	Gray Television
Identification	ASR: 1235966; Facility Owner ID: COC65087
Address	3471 N 16 1/2 Road, Fruita
Type	Guyed
Height	303'
Antenna Types	Broadcast; Microwave
Service Provider	KKCO NBC 11 New
Potential Co-Locations	Yes - 3 or 4
Parcel #	2949-143-00-914
Zoning	AFT
Zoning Jurisdiction	Mesa County
Latitude	39-3-59.25 N
Longitude	-108-44-47.45 W
Place	Black Ridge



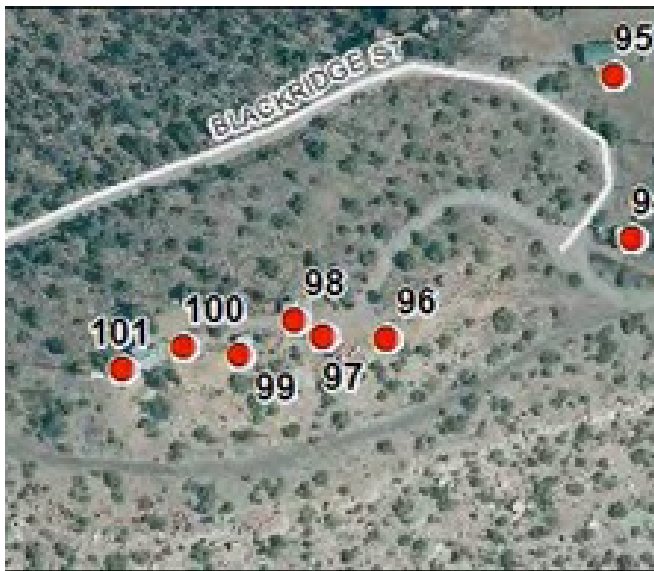
Aerial/Map View - Site 95



Site Photo - Site 95

SITE 96: GUYED TOWER AND LATTICE TOWER

Property Owner	Bureau of Land Management
Facility Owner	Delta Airlines
Identification	Facility Owner ID: COC029019
Address	3471 N 16 1/2 Road, Fruita
Type	1 Guyed; 1 Lattice
Antenna Types	Unsure
Potential Co-Locations	No
Parcel #	2949-143-00-914
Zoning	AFT
Zoning Jurisdiction	Mesa County
Latitude	39-3-56.49 N
Longitude	-108-44-50.67 W
Place	Black Ridge



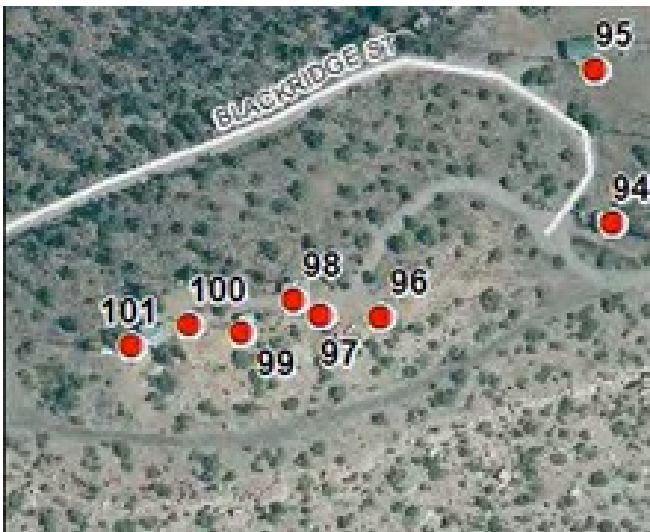
Aerial/Map View - Site 96



Site Photo - Site 96

SITE 97: GUYED TOWER

Property Owner	Bureau of Land Management
Facility Owner	Grand Junction Regional Communications Center
Address	3471 N 16 1/2 Road, Fruita
Site Name	Black Ridge
Type	Guyed
Antenna Types	Microwave
Potential Co-Locations	No
Parcel #	2949-143-00-914
Zoning	AFT
Zoning Jurisdiction	Mesa County
Latitude	39-3-56.52 N
Longitude	-108-44-51.53 W
Place	Black Ridge



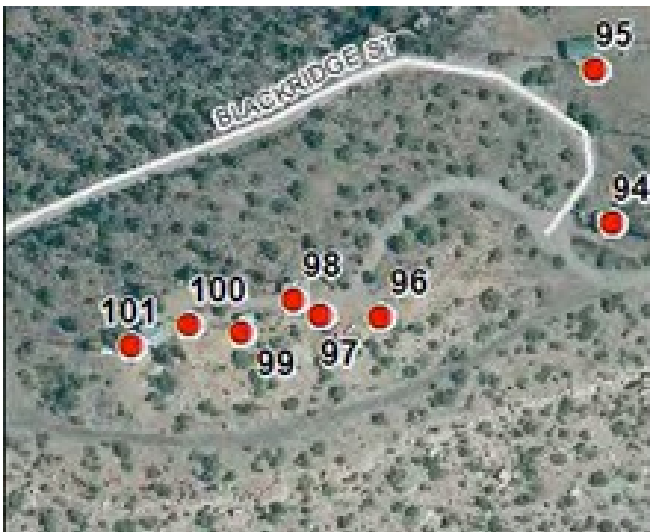
Aerial/Map View - Site 97



Site Photo - Site 97

SITE 98: LATTICE TOWER

Property Owner	Bureau of Land Management
Facility Owner	Northwest Pipeline Corporation
Identification	Facility Owner ID: COC014055
Address	3471 N 16 1/2 Road, Fruita
Type	Lattice
Antenna Types	Microwave
Potential Co-Locations	No
Parcel #	2949-143-00-914
Zoning	AFT
Zoning Jurisdiction	Mesa County
Latitude	39-3-56.71 N
Longitude	-108-44-51.93 W
Place	Black Ridge



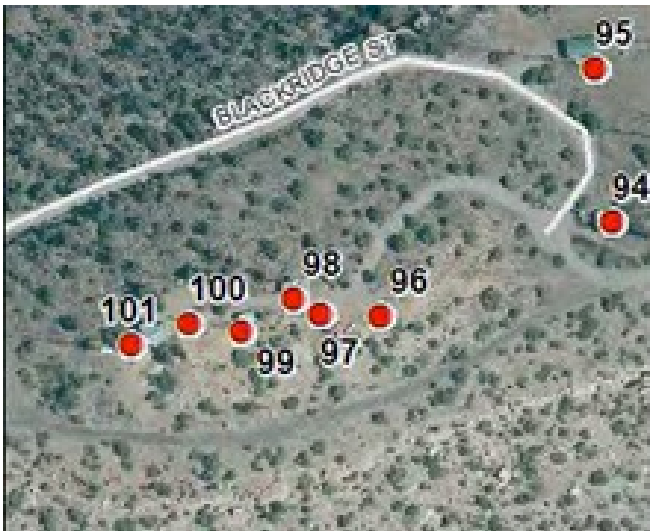
Aerial/Map View - Site 98



Site Photo - Site 98

SITE 99: LATTICE TOWER

Property Owner	Bureau of Land Management
Facility Owner	Mesa County & Civil Air Patrol
Identification	Facility Owner ID: COC29323 & COC8874
Address	3471 N 16 1/2 Road, Fruita
Type	Lattice
Potential Co-Locations	No
Parcel #	2949-143-00-914
Zoning	AFT
Zoning Jurisdiction	Mesa County
Latitude	39-3-56.34 N
Longitude	-108-44-52.71 W
Place	Black Ridge



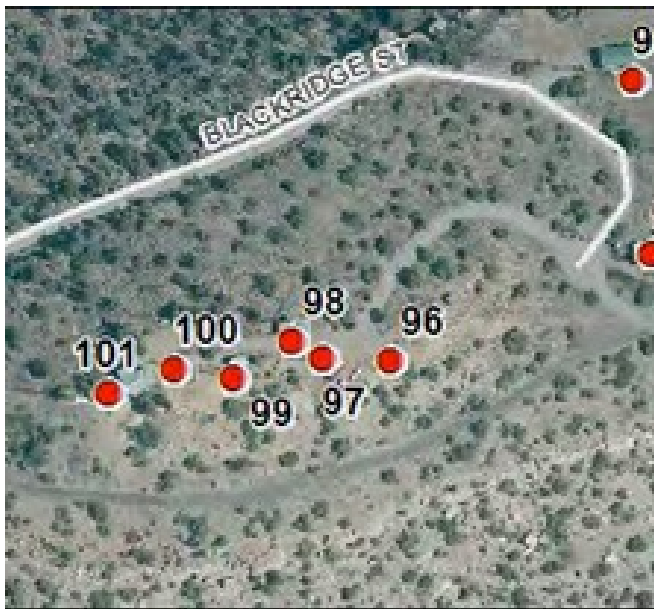
Aerial/Map View - Site 99



Site Photo - Site 99

SITE 100: GUYED TOWER AND WOOD POLE

Property Owner	Bureau of Land Management
Facility Owner	Qwest
Identification	Facility Owner ID: COC013068
Address	3471 N 16 1/2 Road, Fruita
Type	1 Guyed; 1 Wood Pole
Antenna Types	Microwave
Potential Co-Locations	No
Parcel #	2949-143-00-914
Zoning	AFT
Zoning Jurisdiction	Mesa County
Latitude	39-3-56.44 N
Longitude	-108-44-53.45 W
Place	Black Ridge



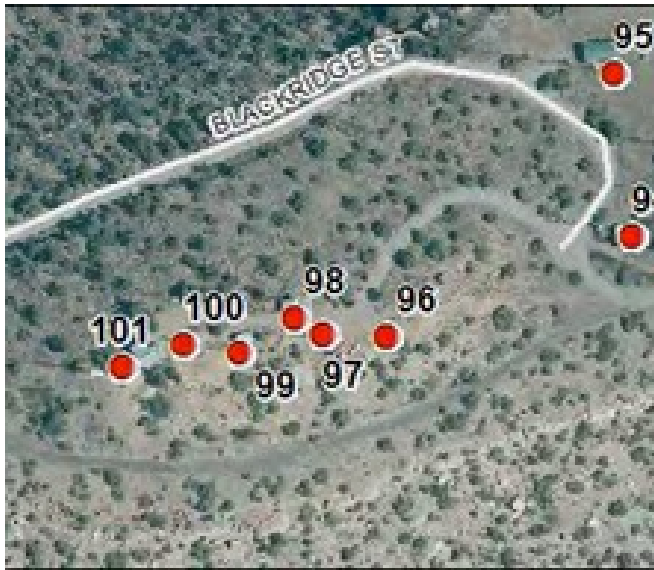
Aerial/Map View - Site 100



Site Photo - Site 100

SITE 101: GUYED TOWERS

Property Owner	Bureau of Land Management
Facility Owner	American Tower Corporation
Identification	ASR: 1022763; Facility Owner ID: 370620 & 370621
Address	3471 N 16 1/2 Road, Fruita
Site Name	Grand Junction 3-A & B
Type	2 Guyed Towers
Height	200' & 350'
Antenna Types	FM Broadcast
Potential Co-Locations	Yes - 2 or 3
Parcel #	2949-143-00-914
Zoning	AFT
Zoning Jurisdiction	Mesa County
Latitude	39-3-56.22 N
Longitude	-108-44-54.32 W
Place	Black Ridge



Aerial/Map View - Site 101



Site Photo - Site 101

SITE 102: GUYED TOWER

Property Owner	Bureau of Land Management
Facility Owner	SBA
Identification	ASR: 1046560; Facility Owner ID: CO30729-M
Address	Glade Park Peake
Site Name	Union Pacific-Glade Park (Mic)
Type	Guyed
Height	160'
Antenna Types	Microwave
Potential Co-Locations	Yes - 2
Parcel #	2949-273-00-914
Zoning	AFT
Zoning Jurisdiction	Mesa County
Latitude	39-3-30.77 N
Longitude	-108-46-14.91 W
Place	Glade Park



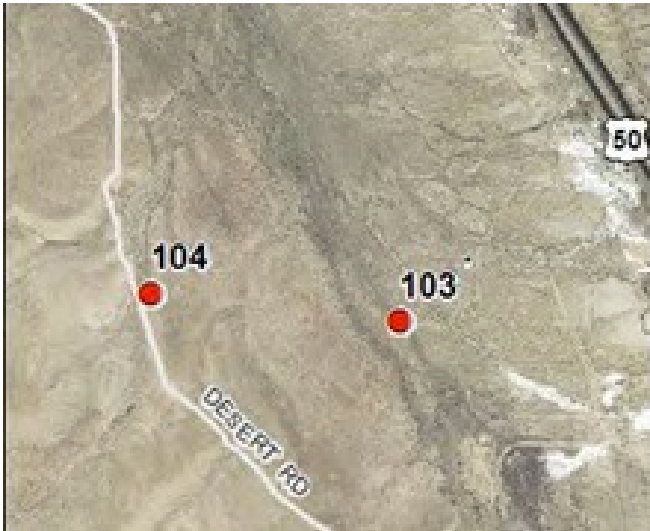
Aerial/Map View - Site 102



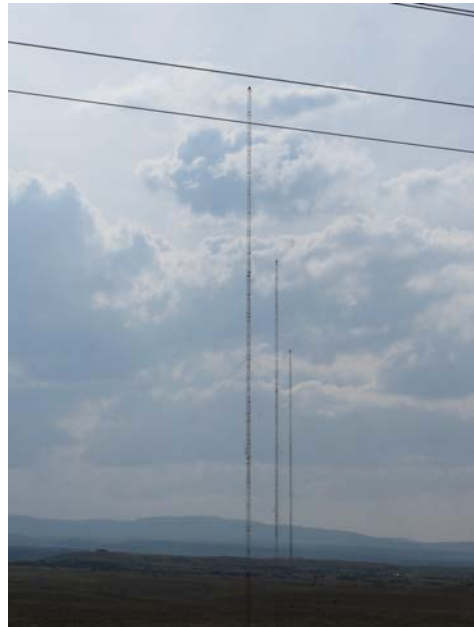
Site Photo - Site 102

SITE 103: GUYED TOWERS

Property Owner	City of Grand Junction
Facility Owner	MBC Grand Broadcasting
Identification	ASR: 1062340, 1062341, 1062342
Address	4351 Highway 50, Whitewater
Type	3 Guyed
Height	346'
Antenna Types	AM Broadcast
Potential Co-Locations	Unknown
Parcel #	2969-303-00-949
Zoning	RSF-2
Zoning Jurisdiction	Mesa County
Latitude	38-57-5.00 N
Longitude	-108-25-18.00 W
Place	Whitewater



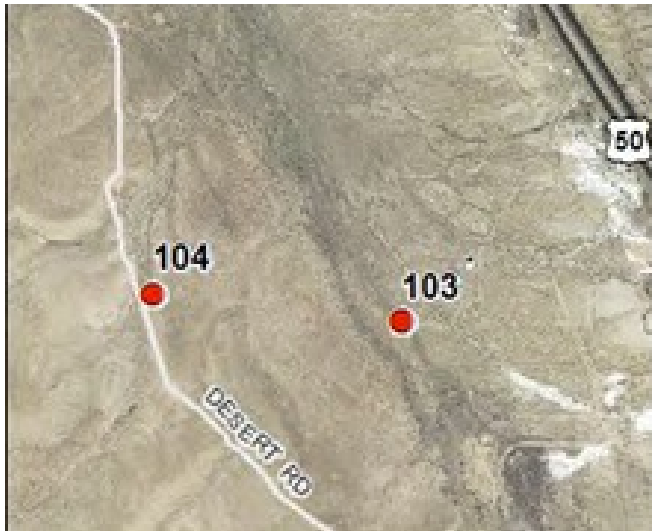
Aerial/Map View - Site 103



Site Photo - Site 103

SITE 104: LATTICE TOWER WITH PWSF

Property Owner	Randy and Laura Swope
Facility Owner	American Tower Corporation
Identification	ASR: 1213477; Facility Owner ID: 35226
Address	101 Kannah Creek, Whitewater
Site Name	Bean Ranch
Type	Lattice
Height	190'
Antenna Types	PWSF
Service Provider	1: Texas Telecom
Potential Co-Locations	Yes - 5
Parcel #	2969-324-00-195
Zoning	AFT
Zoning Jurisdiction	Mesa County
Latitude	38-56-7.59 N
Longitude	108-23-36.60 W
Place	Whitewater



Aerial/Map View - Site 104



Site Photo - Site 104

SITE 105: GUYED TOWER

Property Owner	Bureau of Land Management
Facility Owner	Colorado State
Address	884 Highway 141, Whitewater
Type	Guyed
Antenna Types	Microwave
Potential Co-Locations	No
Parcel #	3205-314-00-914
Zoning	AFT
Zoning Jurisdiction	Mesa County
Latitude	38-53-52.84 N
Longitude	-108-29-48.27 W
Place	Nine Mile



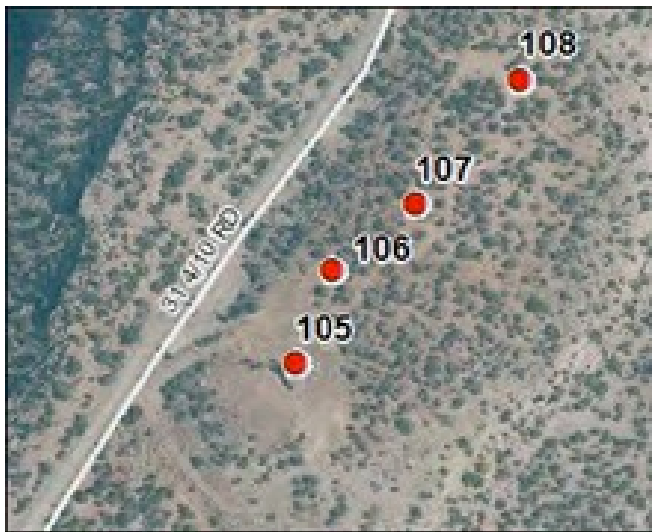
Aerial/Map View - Site 105



Site Photo - Site 105

SITE 106: WOOD POLE

Property Owner	Bureau of Land Management
Facility Owner	Union Pacific Railroad
Identification	Facility Owner ID: COMOS00455
Address	884 Highway 141, Whitewater
Site Name	Whitewater
Type	Wood Pole
Potential Co-Locations	No
Parcel #	3205-314-00-914
Zoning	AFT
Zoning Jurisdiction	Mesa County
Latitude	38-53-54.18 N
Longitude	-108-29-47.54 W
Place	Nine Mile



Aerial/Map View - Site 106



Site Photo - Site 106

SITE 107: GUYED TOWER AND LATTICE TOWER

Property Owner	Bureau of Land Management
Facility Owner	Mountain Communication
Address	884 Highway 141, Whitewater
Type	1 Guyed; 1 Lattice
Potential Co-Locations	Unknown
Parcel #	3205-314-00-914
Zoning	AFT
Zoning Jurisdiction	Mesa County
Latitude	38-53-55.11 N
Longitude	-108-29-46.01 W
Place	Nine Mile



Aerial/Map View - Site 107



Site Photo - Site 107

SITE 108: GUYED TOWER

Property Owner	Bureau of Land Management
Facility Owner	Nexstar Broadcasting
Address	884 Highway 141, Whitewater
Type	Guyed
Potential Co-Locations	No
Parcel #	3205-314-00-914
Zoning	AFT
Zoning Jurisdiction	Mesa County
Latitude	38-53-56.86 N
Longitude	-108-29-44.05 W
Place	Nine Mile



Aerial/Map View - Site 108



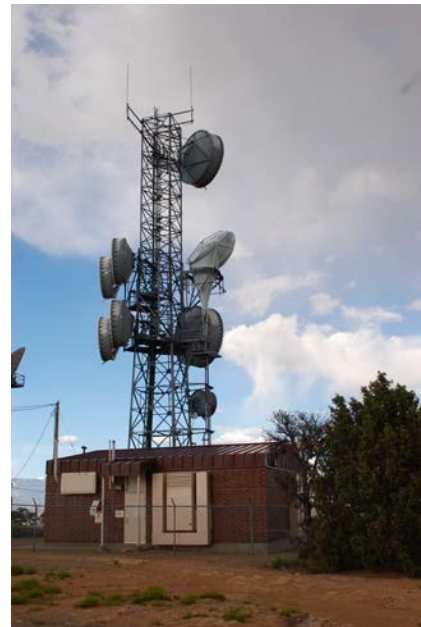
Site Photo - Site 108

SITE 109: LATTICE TOWER

Property Owner	Bureau of Land Management
Facility Owner	American Tower Corporation
Identification	ASR: 1024244; Facility Owner ID: 88834
Address	884 Highway 141, Whitewater
Site Name	Whitewater
Type	Lattice
Height	106'
Antenna Types	Microwave
Potential Co-Locations	No
Parcel #	3205-314-00-914
Zoning	AFT
Zoning Jurisdiction	Mesa County
Latitude	38-54-9.76 N
Longitude	-108-29-43.51 W
Place	Nine Mile



Aerial/Map View - Site 109



Site Photo - Site 109

SITE 110: SELF SUPPORT TOWER

Property Owner	Bureau of Land Management
Facility Owner	American Tower Corporation
Address	884 Highway 141, Whitewater
Type	Self Support
Antenna Types	Microwave
Potential Co-Locations	No
Parcel #	3205-314-00-914
Zoning	AFT
Zoning Jurisdiction	Mesa County
Latitude	38-54-10.74 N
Longitude	-108-29-42.96 W
Place	Nine Mile



Aerial/Map View - Site 110



Site Photo - Site 110

SITE 111: LATTICE TOWER

Property Owner	United States Department of Agriculture (Grand Mesa National Forest)
Facility Owner	
Type	Lattice
Height	50'
Potential Co-Locations	No
Parcel #	3199-251-00-001
Zoning Jurisdiction	Delta County
Latitude	38-52-37.68 N
Longitude	-108-13-40.42 W
Place	Mesa Point



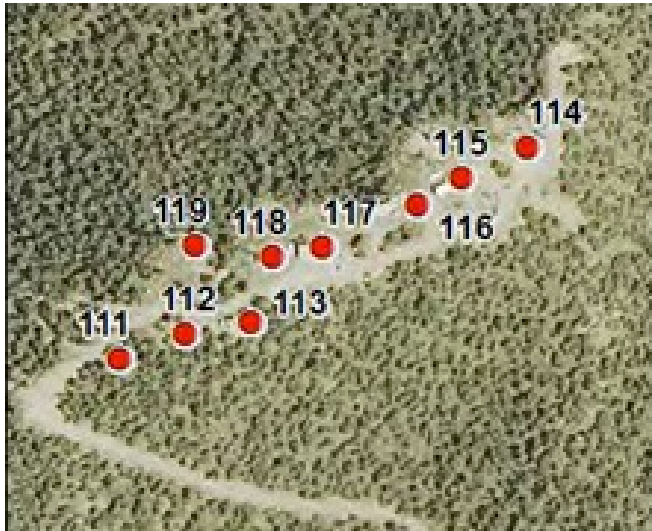
Aerial/Map View - Site 111



Site Photo - Site 111

SITE 112: LATTICE TOWER

Property Owner	United States Department of Agriculture (Grand Mesa National Forest)
Facility Owner	
Type	Lattice
Height	25'
Antenna Types	Microwave
Potential Co-Locations	No
Parcel #	3199-251-00-001
Zoning Jurisdiction	Delta County
Latitude	38-52-38.02 N
Longitude	-108-13-39.22 W
Place	Mesa Point



Aerial/Map View - Site 112



Site Photo - Site 112

SITE 113: MONOPOLE WITH PWSF

Property Owner	United States Department of Agriculture (Grand Mesa National Forest)
Facility Owner	American Tower Corporation
Identification	Facility Owner ID: 82116
Site Name	Hwy 50
Type	Monopole
Height	65'
Antenna Types	PWSF; Microwave
Service Provider	1: Verizon
Potential Co-Locations	Yes - 1
Parcel #	3199-251-00-001
Zoning Jurisdiction	Delta County
Latitude	38-52-38.15 N
Longitude	-108-13-38.03 W
Place	Mesa Point



Aerial/Map View - Site 113



Site Photo - Site 113

SITE 114: GUYED TOWER

Property Owner	United States Department of Agriculture (Grand Mesa National Forest)
Facility Owner	MBC Grand Broadcasting
Type	Guyed
Height	105'
Antenna Types	FM Broadcast
Potential Co-Locations	Unknown
Parcel #	3199-251-00-001
Zoning Jurisdiction	Delta County
Latitude	38-52-40.52 N
Longitude	-108-13-32.92 W
Place	Mesa Point



Aerial/Map View - Site 114



Site Photo - Site 114

SITE 115: GUYED TOWER AND WOOD POLE

Property Owner	United States Department of Agriculture (Grand Mesa National Forest)
Facility Owner	
Type	1 Guyed & 1 Wood Pole
Height	95' & 50'
Antenna Types	Broadcast
Service Provider	KKNN FM
Potential Co-Locations	Unknown
Parcel #	3199-251-00-001
Zoning Jurisdiction	Delta County
Latitude	38-52-40.12 N
Longitude	-108-13-34.14 W
Place	Mesa Point



Aerial/Map View - Site 115



Site Photo - Site 115

SITE 116: MONOPOLE WITH PWSF

Property Owner	United States Department of Agriculture (Grand Mesa National Forest)
Facility Owner	AT&T
Type	Monopole
Height	30'
Antenna Types	PWSF; Microwave
Service Provider	1: AT&T
Potential Co-Locations	Possibly
Parcel #	3199-251-00-001
Zoning Jurisdiction	Delta County
Latitude	38-52-39.76 N
Longitude	-108-13-34.96 W
Place	Mesa Point



Aerial/Map View - Site 116



Site Photo - Site 116

SITE 117: GUYED TOWER

Property Owner	United States Department of Agriculture (Grand Mesa National Forest)
Facility Owner	
Type	Guyed
Height	75'
Antenna Types	FM Broadcast
Potential Co-Locations	Unknown
Parcel #	3199-251-00-001
Zoning Jurisdiction	Delta County
Latitude	38-52-39.20 N
Longitude	-108-13-36.70 W
Place	Mesa Point



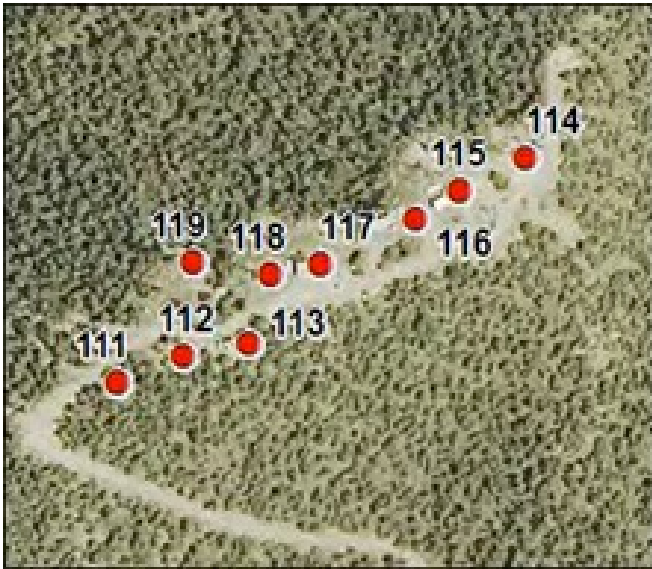
Aerial/Map View - Site 117



Site Photo - Site 117

SITE 118: LATTICE TOWER

Property Owner	United States Department of Agriculture (Grand Mesa National Forest)
Facility Owner	
Type	Lattice
Height	35'
Antenna Types	Microwave
Potential Co-Locations	No
Parcel #	3199-251-00-001
Zoning Jurisdiction	Delta County
Latitude	38-52-39.07 N
Longitude	-108-13-37.60 W
Place	Mesa Point



Aerial/Map View - Site 118



Site Photo - Site 118

SITE 119: LATTICE TOWER

Property Owner	United States Department of Agriculture (Grand Mesa National Forest)
Facility Owner	Grand Junction Regional Communications Center
Type	Lattice
Height	50'
Antenna Types	Microwave
Service Provider	FAA
Potential Co-Locations	No
Parcel #	3199-251-00-001
Zoning Jurisdiction	Delta County
Latitude	38-52-39.27 N
Longitude	-108-13-39.00 W
Place	Mesa Point



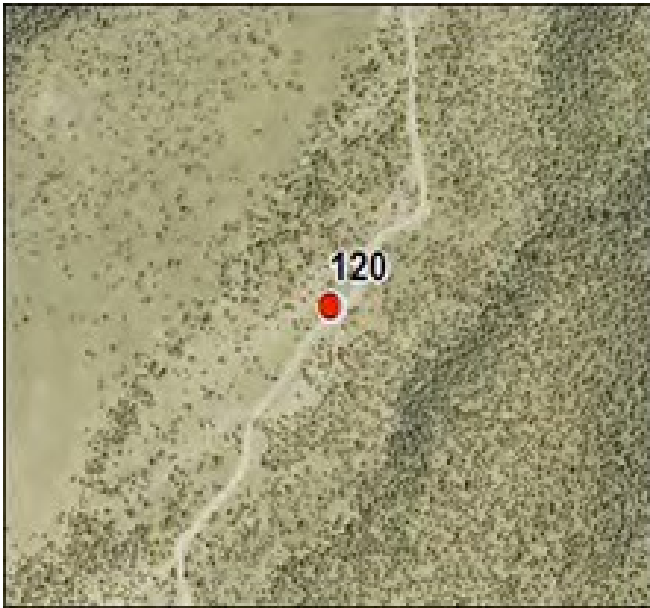
Aerial/Map View - Site 119



Site Photo - Site 119

SITE 120: LATTICE TOWER

Property Owner	Bureau of Land Management
Facility Owner	BLM Test Site
Address	Mesa Point Road below Mesa Point
Type	Lattice
Antenna Types	Weather Data Collection
Potential Co-Locations	No
Parcel #	3233-011-00-001
Zoning Jurisdiction	Delta County
Latitude	38-52-6.20 N
Longitude	-108-14-14.80 W
Place	Mesa Point



Aerial/Map View - Site 120



Site Photo - Site 120

SITE 121: LATTICE TOWER WITH PWSF

Property Owner	Michael and Barbara Matthes
Facility Owner	SBA
Identification	ASR: 1216012; Facility Owner ID: CO10487-A
Address	5113 Highway 50, Whitewater
Site Name	Quartz
Type	Lattice
Height	198'
Antenna Types	PWSF; Microwave
Service Provider	4: AT&T; Cleartalk; Texas Telecommunications; Union Wireless
Potential Co-Locations	Yes - 4
Parcel #	3203-262-00-214
Zoning	AFT
Zoning Jurisdiction	Mesa County
Latitude	38-52-15.18 N
Longitude	-108-20-37.08 W
Place	Whitewater



Aerial/Map View - Site 121



Site Photo - Site 121

SITE 122: GUYED TOWER

Property Owner	Uncompahgre National Forest
Facility Owner	Crown Castle International
Identification	Facility Owner ID: 856591
Address	25 1/10 Road, Whitewater
Site Name	Uncompahgre Butte Rerad
Type	Guyed
Height	70'
Service Provider	1: AT&T
Potential Co-Locations	Unknown
Parcel #	3735-034-00-913
Zoning	AFT
Zoning Jurisdiction	Mesa County
Latitude	38-34-39.75 N
Longitude	-108-38-46.37 W
Place	Uncompahgre Butte



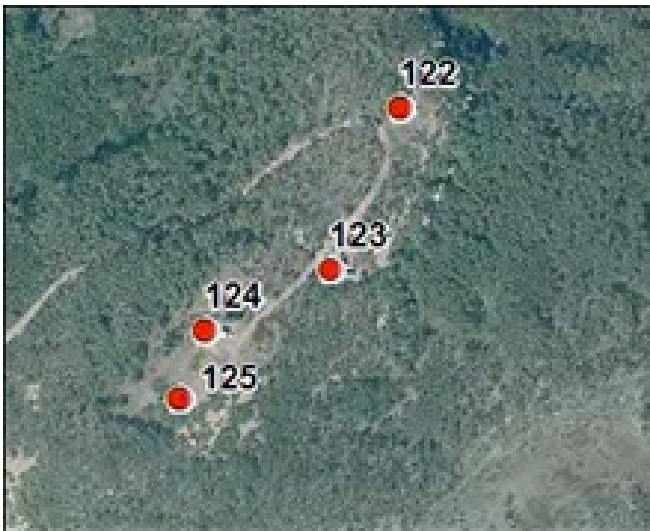
Aerial/Map View - Site 122



Site Photo - Site 122

SITE 123: LATTICE TOWER

Property Owner	Uncompahgre National Forest
Facility Owner	Nucla Naturita Phone Company
Address	25 1/10 Road, Whitewater
Type	Lattice
Antenna Types	Microwave
Potential Co-Locations	Unknown
Parcel #	3735-034-00-913
Zoning	AFT
Zoning Jurisdiction	Mesa County
Latitude	38-34-37.05 N
Longitude	-108-38-47.99 W
Place	Uncompahgre Butte



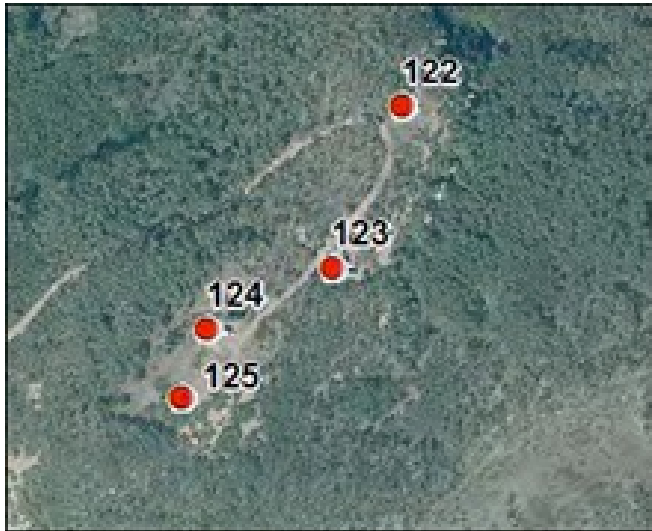
Aerial/Map View - Site 123



Site Photo - Site 123

SITE 124: LATTICE TOWER WITH PWSF

Property Owner	Uncompahgre National Forest
Facility Owner	Grand Junction Regional Communications Center
Address	25 1/10 Road, Whitewater
Type	Lattice
Height	80'
Antenna Types	Microwave; PWSF
Service Provider	AT&T
Potential Co-Locations	No
Parcel #	3735-034-00-913
Zoning	AFT
Zoning Jurisdiction	Mesa County
Latitude	38-34-36.08 N
Longitude	-108-38-50.77 W
Place	Uncompahgre Butte



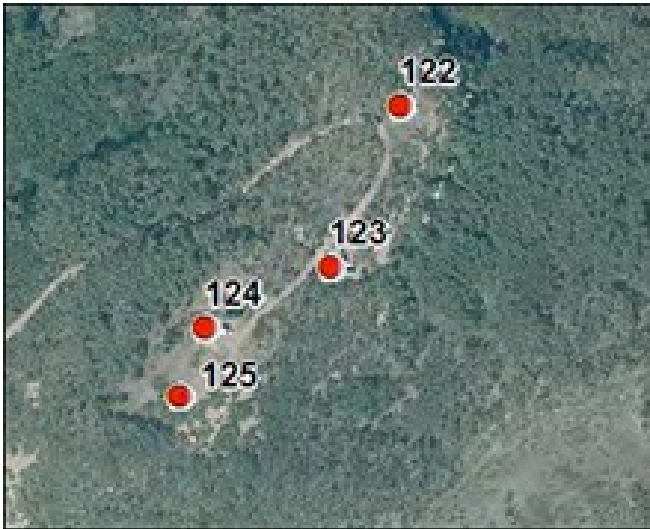
Aerial/Map View - Site 124



Site Photo - Site 124

SITE 125: GUYED TOWER

Property Owner	Uncompahgre National Forest
Facility Owner	Ham Radio Club
Address	25 1/10 Road, Whitewater
Type	Guyed
Potential Co-Locations	No
Parcel #	3735-034-00-913
Zoning	AFT
Zoning Jurisdiction	Mesa County
Latitude	38-34-34.87 N
Longitude	-108-38-51.37 W
Place	Uncompahgre Butte



Aerial/Map View - Site 125



Site Photo - Site 125

SITE 126: CONCEALED TOWER WITH PWSF

Property Owner	Donna S. Pederson Co-Trustee
Facility Owner	
Address	1450 W Independent Ave, Grand Junction
Site Name	Grand Junction CO
Type	Flagpole
Antenna Types	PWSF
Service Provider	1: Verizon
Parcel #	2945-103-64-001
Zoning	C-2
Zoning Jurisdiction	Grand Junction
Latitude	39-4-48.72 N
Longitude	-108-35-11.86 W
Place	GJ Urban



Aerial/Map View - Site 126



Site Photo - Site 126

SITE 127: MONOPOLE WITH PWSF

Property Owner	School District 51
Facility Owner	
Address	2115 Grand Avenue, Grand Junction
Type	Monopole
Antenna Types	PWSF
Service Provider	1: Verizon
Parcel #	2945-134-00-942
Zoning	C-2
Zoning Jurisdiction	Grand Junction
Latitude	39-4-12.00 N
Longitude	-108-32-23.88 W
Place	GJ Urban



Aerial/Map View - Site 127



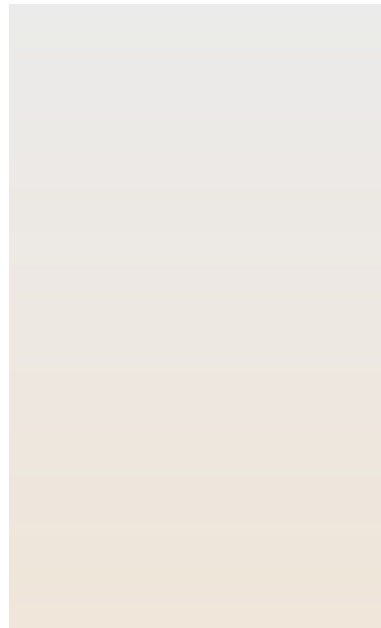
Site Photo - Site 127

SITE 128: PROPOSED TOWER WITH PWSF

Property Owner	School District 51 & Central High School
Facility Owner	
Address	550 Warrior Way, Grand Junction
Antenna Types	Proposed PWSF
Parcel #	2943-102-00-942
Zoning	R-O
Zoning Jurisdiction	Grand Junction
Latitude	39-5-11.04 N
Longitude	-108-28-18.72 W
Place	Clifton



Aerial/Map View - Site 128



Site Photo - Site 128

SITE 129: CONCEALED TOWER WITH PWSF

Property Owner	Monument Baptist Church
Facility Owner	
Address	486 23 Road, Grand Junction
Type	Concealed
Antenna Types	PWSF
Service Provider	3 Unknown
Potential Co-Locations	No
Parcel #	2945-172-00-954
Zoning	RSF-4
Zoning Jurisdiction	Mesa County
Latitude	39-4-31.89 N
Longitude	-108-37-32.01 W
Place	GJ Urban



Aerial/Map View - Site 129



Site Photo - Site 129

SITE 130: LATTICE TOWER WITH PWSF

Property Owner	Mesa County
Facility Owner	Grand Junction Regional Communications Center
Address	15620 57 1/2 Road, Collbran
Type	Lattice
Antenna Types	Emergency Services
Potential Co-Locations	Yes
Parcel #	2667-341-00-931
Zoning Jurisdiction	Collbran
Latitude	39-14-9.77 N
Longitude	-107-58-43.90 W
Place	Collbran



Aerial/Map View - Site 130



Site Photo - Site 130

SITE 131: BASE STATION WITH PWSF

Property Owner	City of Fruita
Facility Owner	
Address	1725 Broadway, Grand Junction
Type	Water Tank Antenna
Antenna Types	PWSF
Service Provider	1: Unknown
Parcel #	2697-293-00-941
Zoning	AFT
Zoning Jurisdiction	Mesa County
Latitude	39-7-19.188 N
Longitude	-108-43-58.235 W
Place	Fruita/Monument



Aerial/Map View - Site 131



Site Photo - Site 131

SITE 132: SELF SUPPORT TOWER

Property Owner	Bureau of Land Management
Facility Owner	FAA
Address	Wilson Boulevard, Palisade
Type	Self Support
Antenna Types	FAA
Potential Co-Locations	No
Parcel #	2941-293-00-914
Zoning	AFT
Zoning Jurisdiction	Mesa County
Latitude	39-2-20.373 N
Longitude	-108-24-19.207 W
Place	East Orchard Mesa



Aerial/Map View - Site 132



Site Photo - Site 132

SITE 133: LATTICE TOWER

Property Owner	Bureau of Land Management
Facility Owner	Grand Junction Regional Communications Center
Address	5/10 Road, Gateway
Type	Lattice
Height	40'
Antenna Types	Microwave
Parcel #	3477-261-00-914
Zoning	AFT
Zoning Jurisdiction	Mesa County
Latitude	38-38-45.75 N
Longitude	-109-0-27.41 W
Place	Lee's Point



Aerial/Map View - Site 133



Site Photo - Site 133

SITE 134: GUYED TOWER WITH PWSF

Property Owner	Bureau of Land Management
Facility Owner	The Leasing Company, Inc
Identification	Facility Owner ID: COC64332
Address	5/10 Road, Gateway
Site Name	Gateway Unaweep Fire District
Type	Guyed
Height	100'
Antenna Types	PWSF
Service Provider	Comnet Wireless
Parcel #	3477-261-00-914
Zoning	AFT
Zoning Jurisdiction	Mesa County
Latitude	38-38-47.08 N
Longitude	-109-0-24.12 W
Place	Lee's Point



Aerial/Map View - Site 134



Site Photo - Site 134

SITE 135: LATTICE TOWER

Property Owner	Bureau of Land Management
Facility Owner	Nucla Naturita Phone Company
Address	5/10 Road, Gateway
Type	Lattice
Antenna Types	PWSF
Parcel #	3477-261-00-914
Zoning	AFT
Zoning Jurisdiction	Mesa County
Latitude	38-38-45.42 N
Longitude	-109-0-27.60 W
Place	Lee's Point



Aerial/Map View - Site 135



Site Photo - Site 135

SITE 136: LATTICE TOWER

Property Owner	Helen E Kelley Trustee
Facility Owner	The Leasing Company Inc
Address	1909 N Road, Fruita
Type	Lattice
Antenna Types	Wireless Internet
Parcel #	2695-342-00-595
Zoning	AFT
Zoning Jurisdiction	Mesa County
Latitude	39-12-26.33 N
Longitude	-108-41-54.69 W
Place	Lower Valley



Aerial/Map View - Site 136



Site Photo - Site 136

SITE 137: SELF SUPPORT TOWER

Property Owner	Jeffery and Cynthia Jones
Facility Owner	
Address	1619 O Road, Loma
Type	Self Support
Parcel #	2695-301-00-432
Zoning	AFT
Zoning Jurisdiction	Mesa County
Latitude	39-13-10.24 N
Longitude	-108-44-40.11 W
Place	Lower Valley



Aerial/Map View - Site 137



Site Photo - Site 137

SITE 138: LATTICE TOWER

Property Owner	Joe and Teresa Massey
Facility Owner	Sky Beam
Address	1464 16 Road, Loma
Type	Lattice
Antenna Types	Wireless Internet
Service Provider	Sky Beam
Parcel #	2695-303-00-423
Zoning	AFT
Zoning Jurisdiction	Mesa County
Latitude	39-12-46.37 N
Longitude	-108-45-1.18 W
Place	Lower Valley



Aerial/Map View - Site 138



Site Photo - Site 138

SITE 139: LATTICE TOWER

Property Owner	Gene and Catherine Linn
Facility Owner	Fruita Wireless
Address	1335 16 Road, Fruita
Type	Lattice
Antenna Types	Wireless Internet
Service Provider	Fruita Wireless
Parcel #	2691-364-00-847
Zoning	AFT
Zoning Jurisdiction	Mesa County
Latitude	39-11-59.38 N
Longitude	-108-45-35.35 W
Place	Lower Valley



Aerial/Map View - Site 139



Site Photo - Site 139

SITE 140: GUYED TOWER

Property Owner	Lee O Kelley Trustee
Facility Owner	The Leasing Company Inc
Identification	ASR: 1046334
Address	489 1/2 28 1/2 Road, Grand Junction
Site Name	Mountain House of Prayer
Type	Guyed; Proposed Change to Lattice
Height	119'; Proposed increase to 200'
Antenna Types	PWSF
Parcel #	2943-182-00-090
Zoning	C-1
Zoning Jurisdiction	Grand Junction
Latitude	39-4-33.72 N
Longitude	-108-31-29.04 W
Place	GJ Urban



Aerial/Map View - Site 140



Site Photo - Site 140

SITE 141: LATTICE TOWER

Property Owner	David and Mary Colby
Facility Owner	
Address	246 26 1/4 Road, Grand Junction
Type	Lattice
Potential Co-Locations	No
Parcel #	2945-263-00-032
Zoning	R-2
Zoning Jurisdiction	Grand Junction
Latitude	39-2-25.01 N
Longitude	-108-33-55.18 W
Place	GJ Urban



Aerial/Map View - Site 141



Site Photo - Site 141

SITE 142: SELF SUPPORT TOWER

Property Owner	Eagle Telecommunications Inc
Facility Owner	
Address	11086 Highway 65, Mesa
Type	Self Support
Potential Co-Locations	No
Parcel #	2713-203-00-070
Zoning	Village of Mesa Overlay Zone
Zoning Jurisdiction	Mesa County
Latitude	39-9-59.95 N
Longitude	-108-8-13.20 W
Place	Mesa



Aerial/Map View - Site 142



Site Photo - Site 142

SITE 143: POLE WITH PWSF

Property Owner	Northern Cross Arm
Facility Owner	Verizon
Address	1065 Highway 6 & 50
Site Name	Country Jam Ranch
Type	Pole
Height	55' 8"
Antenna Types	PWSF
Service Provider	Verizon
Parcel #	2691-302-01-001
Zoning	PUD
Zoning Jurisdiction	Mesa County
Latitude	39-12-55.33 N
Longitude	-108-51-30.09 W
Place	Mack



Aerial/Map View - Site 143



Site Photo - Site 143

SITE 144: POLE WITH PWSF

Property Owner	The Grand Junction Two Development LLC
Facility Owner	Verizon
Address	1450 W Independent Ave
Site Name	Hobby Lobby
Type	Pole
Height	110'
Antenna Types	PWSF
Service Provider	Verizon
Parcel #	2945-103-64-001
Zoning	C-2
Zoning Jurisdiction	Grand Junction
Latitude	39-4-46 N
Longitude	-108-35-14 W
Place	Grand Junction



Aerial/Map View - Site 144



Site Photo - Site 144

SITE 145: POLE

Property Owner	Herbert Hays
Facility Owner	Bridger Wireless
Address	3980 I 9/10 Rd
Type	Pole
Parcel #	2709-231-00-008
Zoning	AFT
Zoning Jurisdiction	Mesa County
Latitude	39-10-19 N
Longitude	-108-17-54 W
Place	DeBeque



Aerial/Map View - Site 145



Site Photo - Site 145

SITE 146: SELF SUPPORT TOWER WITH PWSF

Property Owner	Thomas & Carol Schindler
Facility Owner	Commnet Wireless
Address	16563 Kimball Creek Rd
Type	Self Support
Height	199'
Antenna Types	PWSF
Service Provider	ATT
Parcel #	2667-263-00-034
Zoning	AFT
Zoning Jurisdiction	Mesa County
Latitude	39-14-51 N
Longitude	-107-57-54 W
Place	Collbran



Aerial/Map View - Site 146



Site Photo - Site 146

SITE 147: SELF SUPPORT TOWER

Property Owner	Mesa County
Facility Owner	Mesa County
Address	3071 US Hwy & Coffman Rd
Site Name	Land Fill
Type	Self Support
Height	50'
Parcel #	2967-042-00-200
Zoning	AFT
Zoning Jurisdiction	Mesa County
Latitude	39-0-58 N
Longitude	-108-29-44 W
Place	Orchard Mesa



Aerial/Map View - Site 147



Site Photo - Site 147

SITE 148: MONOPOLE WITH PWSF

Property Owner	City of Grand Junction
Facility Owner	Verizon
Address	546 28 1/4 RD
Site Name	Columbine Park
Type	Monopole
Height	70'
Antenna Types	PWSF
Service Provider	Verizon
Parcel #	2943-073-00-235
Zoning	P-2
Zoning Jurisdiction	Grand Junction
Latitude	39-5-2 N
Longitude	-108-31-37 W
Place	GJ Urban



Aerial/Map View - Site 148



Site Photo - Site 148

SITE 149: SELF SUPPORT TOWER

Property Owner	Larry Bowles
Facility Owner	Adaptive Communications
Address	3351 E 1/4 RD
Type	Self Support
Height	120'
Parcel #	2943-124-00-162
Zoning	AFT
Zoning Jurisdiction	Mesa County
Latitude	39-4-49 N
Longitude	-108-25-51 W
Place	Clifton



Aerial/Map View - Site 149



Site Photo - Site 149

SITE 150: SELF SUPPORT TOWER

Property Owner	Gary Peterson
Facility Owner	Adaptive Communications
Address	1024 19 RD
Type	Self Support
Height	120'
Parcel #	2697-153-00-181
Zoning	AFT
Zoning Jurisdiction	Mesa County
Latitude	39-9-12 N
Longitude	-108-42-1 W
Place	Fruita



Aerial/Map View - Site 150



Site Photo - Site 150

SITE 151: SELF SUPPORT TOWER

Property Owner	Mitchel Dietrich
Facility Owner	Adaptive Communications
Address	1622 HIGHWAY 6 AND 50
Type	Self Support
Height	120'
Parcel #	2697-073-00-040
Zoning	AFT
Zoning Jurisdiction	Mesa County
Latitude	39-10-4 N
Longitude	-108-45-13 W
Place	Fruita



Aerial/Map View - Site 151



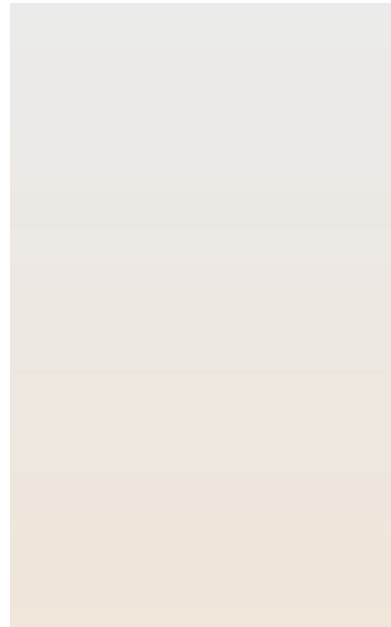
Site Photo - Site 151

SITE 152: SELF SUPPORT TOWER

Property Owner	SSH Investments LLC
Facility Owner	Adaptive Communications
Address	695 36 RD
Type	Self Support
Height	120'
Parcel #	2941-051-00-013
Zoning	AFT
Zoning Jurisdiction	Mesa County
Latitude	39-6-12 N
Longitude	-108-23-10 W
Place	Palisade



Aerial/Map View - Site 152



Site Photo - Site 152

SITE 153: GUYED TOWER

Property Owner	DPE LLC
Facility Owner	DPE LLC
Address	575 S WESTGATE DR
Type	Guyed
Height	56'
Parcel #	2945-102-49-001
Zoning	C-2
Zoning Jurisdiction	Grand Junction
Latitude	39-5-16 N
Longitude	-108-35-13 W
Place	GJ Urban



Aerial/Map View - Site 153



Site Photo - Site 153

SITE 154: GUYED TOWER

Property Owner	S & R RESOURCES LLC
Facility Owner	KWSI-LP
Address	1160 N 4TH ST
Type	Guyed
Height	35'
Parcel #	2945-113-26-004
Zoning	C-2
Zoning Jurisdiction	Grand Junction
Latitude	39-4-43 N
Longitude	-108-33-57 W
Place	GJ Urban



Aerial/Map View - Site 154



Site Photo - Site 154

SITE 155: GUYED TOWER

Property Owner	ZP JCT WEST LLC
Facility Owner	Adaptive Communications
Address	793 22 RD
Type	Guyed
Height	100'
Parcel #	2697-361-19-002
Zoning	C-2
Zoning Jurisdiction	Grand Junction
Latitude	39-7-12 N
Longitude	-108-38-49 W
Place	GJ Urban



Aerial/Map View - Site 155



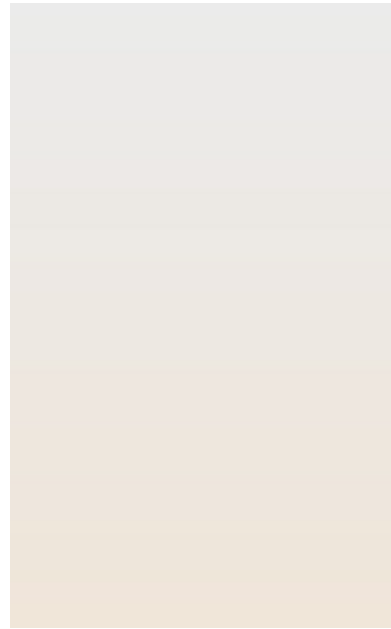
Site Photo - Site 155

SITE 156: BASE STATION

Property Owner	TELTECH INVESTMENTS LLC
Facility Owner	Adaptive Communications
Address	2135 E MAIN ST
Type	Rooftop Antenna
Height	15'
Parcel #	2945-134-00-018
Zoning	I-1
Zoning Jurisdiction	Grand Junction
Latitude	39-4-2 N
Longitude	-108-32-18 W
Place	GJ Urban



Aerial/Map View - Site 156



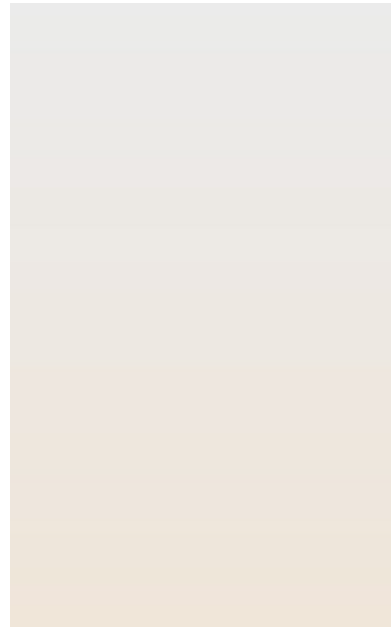
Site Photo - Site 156

SITE 157: POLE WITH PWSF

Property Owner	City of Grand Junction
Facility Owner	Mobilite
Type	Small Cell Pole
Height	39'
Antenna Types	PWSF
Parcel #	City of Grand Junction ROW
Zoning	R-8
Zoning Jurisdiction	Grand Junction
Latitude	39-4-24 N
Longitude	-108-32-2 W
Place	GJ Urban



Aerial/Map View - Site 157



Site Photo - Site 157

SITE 158: MONOPOLE WITH PWSF

Property Owner	City of Grand Junction
Facility Owner	Verizon
Address	728 24 RD
Type	Monopole
Height	70'
Antenna Types	PWSF
Service Provider	Verizon
Parcel #	2701-333-00-152
Zoning	CSR
Zoning Jurisdiction	Grand Junction
Latitude	39-6-48 N
Longitude	-108-36-21 W
Place	GJ Urban



Aerial/Map View - Site 158



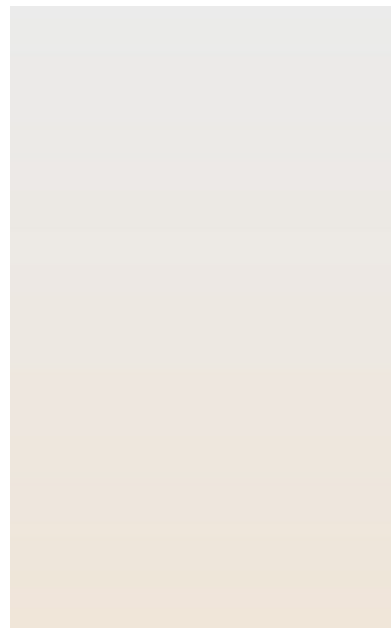
Site Photo - Site 158

SITE 159: BASE STATION WITH PWSF

Property Owner	WAL MART REAL ESTATE BUSINESS TRUST
Facility Owner	Verizon
Address	2881 NORTH AVE
Type	Rooftop Antenna
Height	5'
Antenna Types	PWSF
Service Provider	Verizon
Parcel #	2943-181-15-001
Zoning	C-1
Zoning Jurisdiction	Grand Junction
Latitude	39-4-32 N
Longitude	-108-31-9 W
Place	GJ Urban



Aerial/Map View - Site 159



Site Photo - Site 159

SITE 160: LATTICE TOWER

Property Owner	Bureau of Land Management
Facility Owner	Grand Junction Regional Communications Center
Address	6238 44 1/2 Rd
Site Name	Grand Mesa
Type	Lattice
Height	150'
Antenna Types	Microwave
Parcel #	2935-153-00-101
Zoning	AFT
Zoning Jurisdiction	Mesa County
Latitude	39-5-26 N
Longitude	-108-13-26 W
Place	Lands End



Aerial/Map View - Site 160



Site Photo - Site 160

SITE 161: GUYED TOWER WITH PWSF

Property Owner	JUSTICE MELISSA
Facility Owner	Skyway Towers
Address	1798 13 RD
Site Name	Hay Canyon
Type	Guyed
Height	300'
Antenna Types	PWSF
Service Provider	T-Mobile
Parcel #	2691-102-00-087
Zoning	AFT
Zoning Jurisdiction	Mesa County
Latitude	39-15-55 N
Longitude	-108-48-32 W
Place	Loma



Aerial/Map View - Site 161



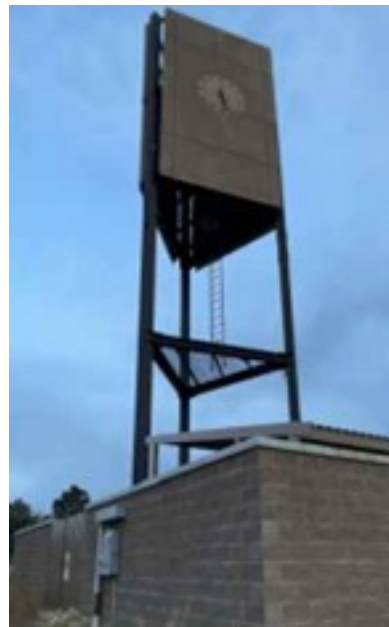
Site Photo - Site 161

SITE 162: CONCEALED TOWER WITH PWSF

Property Owner	CITY OF GRAND JUNCTION
Facility Owner	Verizon
Address	2649 H RD
Site Name	Saccomano
Type	Concealed
Height	65'
Antenna Types	PWSF
Service Provider	Verizon
Parcel #	2701-352-51-005
Zoning	P-1
Zoning Jurisdiction	Grand Junction
Latitude	39-7-14 N
Longitude	-108-33-43 W
Place	GJ Urban



Aerial/Map View - Site 162



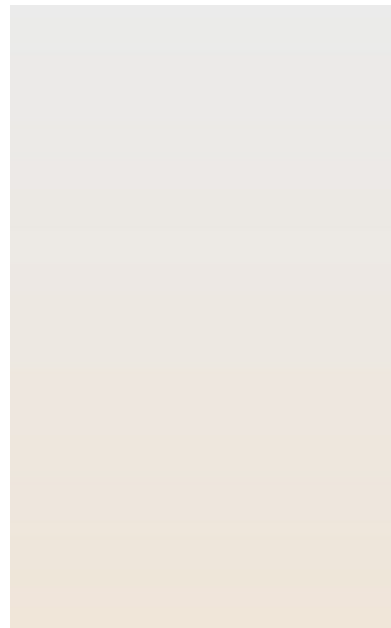
Site Photo - Site 162

SITE 163: CONCEALED TOWER

Property Owner	V&S Holdings
Facility Owner	Adaptive Communications
Address	2403 RIVERSIDE PKWY
Site Name	Saccomano
Type	Concealed Tower
Height	112'
Parcel #	2945-092-11-002
Zoning	I-2
Zoning Jurisdiction	Grand Junction
Latitude	39-5-20 N
Longitude	-108-36-22 W
Place	GJ Urban



Aerial/Map View - Site 163



Site Photo - Site 163

SITE 164: MONOPINE WITH PWSF

Property Owner	WELLS JAMES
Facility Owner	AT&T
Address	637 24 1/2 RD
Type	Monopine
Height	85'
Antenna Types	PWSF
Service Provider	AT&T
Parcel #	2945-043-15-001
Zoning	MU-2
Zoning Jurisdiction	Grand Junction
Latitude	39-5-48 N
Longitude	-108-36-7 W
Place	GJ Urban



Aerial/Map View - Site 164



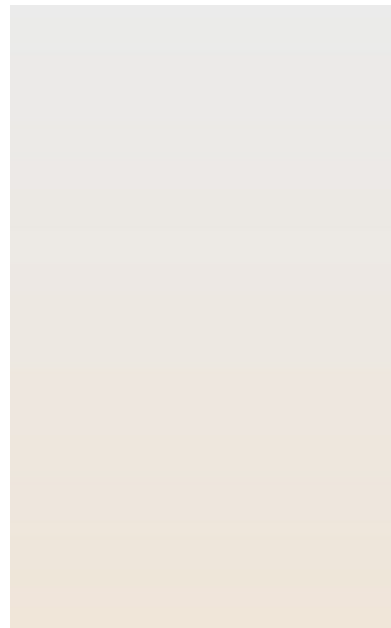
Site Photo - Site 164

SITE 165: CONCEALED TOWER WITH PWSF

Property Owner	Colorado Mesa University
Facility Owner	Sprint
Address	1130 MESA WALK
Type	Concealed
Antenna Types	PWSF
Service Provider	Sprint
Parcel #	2945-114-25-001
Zoning	P-2
Zoning Jurisdiction	Grand Junction
Latitude	39-4-49 N
Longitude	-108-33-20 W
Place	GJ Urban



Aerial/Map View - Site 165



Site Photo - Site 165

SITE 166: MONOPINE WITH PWSF

Property Owner	City of Grand Junction
Facility Owner	Verizon
Address	2884 B 1/2 RD
Site Name	Casterly Rock
Type	Monopine
Height	80'
Antenna Types	PWSF
Service Provider	Verizon
Parcel #	2943-301-42-002
Zoning	R-4
Zoning Jurisdiction	Grand Junction
Latitude	39-2-33 N
Longitude	-108-31-9 W
Place	GJ Urban



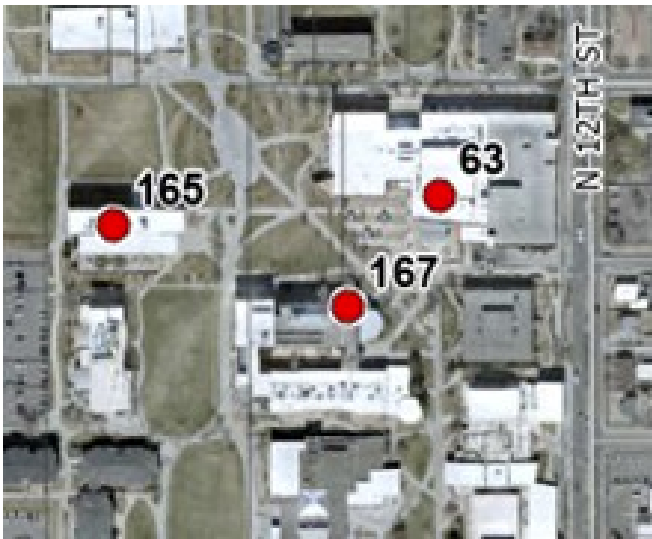
Aerial/Map View - Site 166



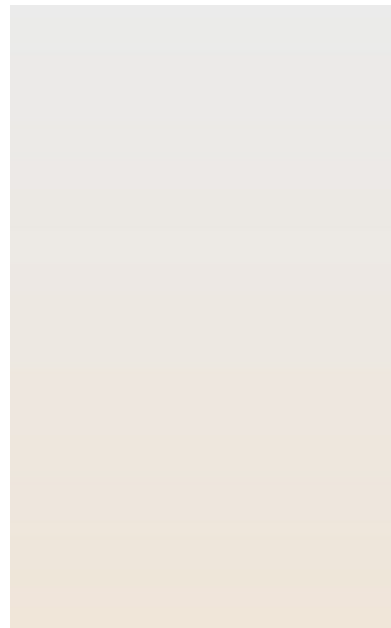
Site Photo - Site 166

SITE 167: CONCEALED TOWER WITH PWSF

Property Owner	Colorado Mesa University
Facility Owner	
Address	1100 NORTH AVE
Type	Concealed
Antenna Types	PWSF
Service Provider	Verizon
Parcel #	2945-114-00-058
Zoning	P-2
Zoning Jurisdiction	Grand Junction
Latitude	39-4-48 N
Longitude	-108-33-14 W
Place	GJ Urban



Aerial/Map View - Site 167



Site Photo - Site 167

SITE 168: BASE STATION WITH PWSF

Property Owner	ROBERTS GARY
Facility Owner	DISH
Address	1111 HORIZON DR
Type	Rooftop Antenna
Antenna Types	PWSF
Service Provider	DISH
Zoning	PD
Zoning Jurisdiction	Grand Junction
Latitude	39-6-2 N
Longitude	-108-33-14 W
Place	GJ Urban



Aerial/Map View - Site 168



Site Photo - Site 168

SITE 169: MONOPINE WITH PWSF

Property Owner	City of Grand Junction
Facility Owner	SBA
Address	542 28 1/4 RD
Type	Monopine
Height	100'
Antenna Types	PWSF
Service Provider	DISH
Parcel #	2943-073-00-237
Zoning	P-2
Zoning Jurisdiction	Grand Junction
Latitude	39-5-4 N
Longitude	-108-31-43 W
Place	GJ Urban



Aerial/Map View - Site 169



Site Photo - Site 169

SITE 170: MONOPOLE

Property Owner	MANDEVILLE TRENT R
Facility Owner	Atlas Tower 1 LLC
Address	1871 J 2/10 RD
Site Name	Sun Rose Road Tower
Type	Monopole
Height	100'
Parcel #	2697-164-00-128
Zoning	AFT
Zoning Jurisdiction	Mesa County
Latitude	39-9-9 N
Longitude	-108-42-23 W
Place	Fruita



Aerial/Map View - Site 170



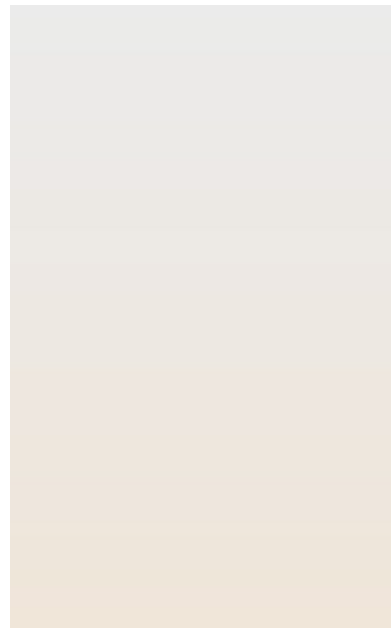
Site Photo - Site 170

SITE 171: SELF SUPPORT TOWER

Property Owner	DPE LLC
Facility Owner	
Address	4595 FS RD
Site Name	Palisade Point Tower
Type	Self Support
Height	100'
Parcel #	2935-153-00-099
Zoning	AFT
Zoning Jurisdiction	Mesa County
Latitude	39-5-23 N
Longitude	-108-13-36 W
Place	Lands End



Aerial/Map View - Site 171



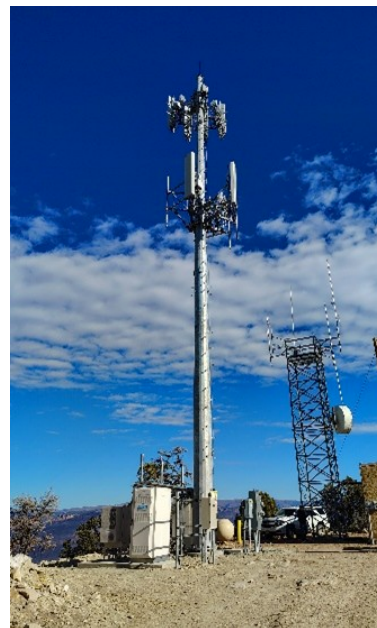
Site Photo - Site 171

SITE 172: MONOPOLE

Property Owner	BLM
Facility Owner	SAC Wireless
Address	34320 4 4/10 RD
Site Name	Gateway Tower
Type	Monopole
Height	80'
Service Provider	Comnet
Parcel #	3477-261-00-001
Zoning	AFT
Zoning Jurisdiction	Mesa County
Latitude	38-38-45 N
Longitude	-109-0-28 W
Place	Lee's Point



Aerial/Map View - Site 172



Site Photo - Site 172

SITE 173: MONOPOLE WITH PWSF

Property Owner	Powderhorn Real Estate
Facility Owner	AT&T
Address	48295 POWDERHORN RD
Type	Monopole
Height	44'
Antenna Types	PWSF
Service Provider	AT&T
Parcel #	2933-203-11-001
Zoning	PUD
Zoning Jurisdiction	Mesa County
Latitude	39-4-15 N
Longitude	-108-9-1 W
Place	Powderhorn



Aerial/Map View - Site 173



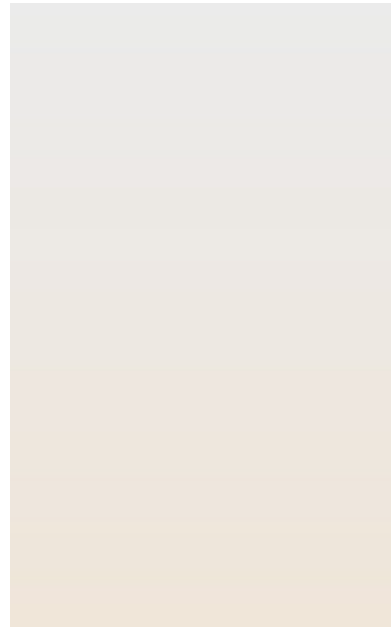
Site Photo - Site 173

SITE 174: SELF SUPPORT TOWER WITH PWSF

Property Owner	LATHAM JOHN RICHARD
Facility Owner	Verizon Wireless
Address	2111 44 RD
Type	Self Support
Height	150'
Antenna Types	PWSF
Service Provider	Verizon
Parcel #	2445-332-00-004
Zoning	AFT
Zoning Jurisdiction	Mesa County
Latitude	39-19-12 N
Longitude	-108-13-29 W
Place	De Beque



Aerial/Map View - Site 174



Site Photo - Site 174

Wireless Master Plan - Site Inventory. This document has been formatted for ADA/Section 508/WCAG 2.1 AA compliance.